

Datasheet for ABIN2790590
anti-SUCLG2 antibody (C-Term)[Go to Product page](#)

1 Image

Overview

Quantity:	100 µL
Target:	SUCLG2
Binding Specificity:	C-Term
Reactivity:	Human, Mouse, Rat, Cow, Dog, Guinea Pig, Horse, Rabbit
Host:	Rabbit
Clonality:	Polyclonal
Conjugate:	This SUCLG2 antibody is un-conjugated
Application:	Western Blotting (WB)

Product Details

Immunogen:	The immunogen is a synthetic peptide directed towards the C-terminal region of Human SUCLG2
Sequence:	AKINFDDNAE FRQKDIFAMD DKSENEPIEN EAAKYDLKYI GLDGNIACFV
Predicted Reactivity:	Cow: 100%, Dog: 100%, Guinea Pig: 100%, Horse: 100%, Human: 100%, Mouse: 100%, Rabbit: 100%, Rat: 100%
Characteristics:	This is a rabbit polyclonal antibody against SUCLG2. It was validated on Western Blot.
Purification:	Affinity Purified

Target Details

Target:	SUCLG2
---------	--------

Target Details

Alternative Name:	SUCLG2 (SUCLG2 Products)
Background:	<p>This gene encodes a GTP-specific beta subunit of succinyl-CoA synthetase. Succinyl-CoA synthetase catalyzes the reversible reaction involving the formation of succinyl-CoA and succinate. Alternate splicing results in multiple transcript variants. Pseudogenes of this gene are found on chromosomes 5 and 12.</p> <p>Alias Symbols: G-BETA, GBETA</p> <p>Protein Interaction Partner: SUMO2, UBC, MDM2, ECT2, S100A16, SCAF4, SDHAF2, MRPL50, SEPT9, PITRM1, PRDX6, SEC22B, SUCLG1, RNASET2, SDHA, MRPL12, NDUFV2, CTTN, CUL3, USP19, DMWD, GPR143,</p> <p>Protein Size: 440</p>
Molecular Weight:	48 kDa
Gene ID:	8801
NCBI Accession:	NM_001177599 , NP_001171070
UniProt:	Q96I99

Application Details

Application Notes:	Optimal working dilutions should be determined experimentally by the investigator.
Comment:	Antigen size: 440 AA
Restrictions:	For Research Use only

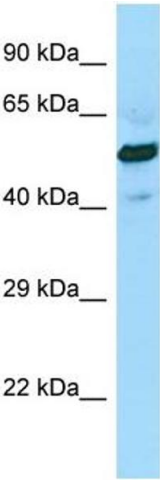
Handling

Format:	Liquid
Concentration:	Lot specific
Buffer:	Liquid. Purified antibody supplied in 1x PBS buffer with 0.09 % (w/v) sodium azide and 2 % sucrose.
Preservative:	Sodium azide
Precaution of Use:	This product contains Sodium azide: a POISONOUS AND HAZARDOUS SUBSTANCE which should be handled by trained staff only.
Handling Advice:	Avoid repeated freeze-thaw cycles.
Storage:	-20 °C

Handling

Storage Comment: For short term use, store at 2-8°C up to 1 week. For long term storage, store at -20°C in small aliquots to prevent freeze-thaw cycles.

Images



Western Blotting

Image 1. WB Suggested Anti-SUCLG2 Antibody Titration:
1.0 ug/ml Positive Control: Fetal Heart