

Datasheet for ABIN2790592  
**anti-SYCE2 antibody (C-Term)**[Go to Product page](#)

## 1 Image

## Overview

Quantity:	100 µL
Target:	SYCE2
Binding Specificity:	C-Term
Reactivity:	Human
Host:	Rabbit
Clonality:	Polyclonal
Conjugate:	This SYCE2 antibody is un-conjugated
Application:	Western Blotting (WB)

## Product Details

Immunogen:	The immunogen is a synthetic peptide directed towards the C-terminal region of Human SYCE2
Sequence:	LKQVCHSVET VYKDLCLQPE QSLRLRWGPD HSRGKSPPRP GNSQPPDVFV
Predicted Reactivity:	Human: 100%
Characteristics:	This is a rabbit polyclonal antibody against SYCE2. It was validated on Western Blot.
Purification:	Affinity Purified

## Target Details

Target:	SYCE2
Alternative Name:	SYCE2 ( <a href="#">SYCE2 Products</a> )
Background:	SYCE2 is a major component of the transverse central element of synaptonemal complexes

## Target Details

(SCS), formed between homologous chromosomes during meiotic prophase. SYCE2 requires SYCP1 in order to be incorporated into the central element and may have a role in the synaptonemal complex assembly, stabilization and recombination.

Alias Symbols: CESC1

Protein Size: 218

Molecular Weight: 23 kDa

Gene ID: 256126

NCBI Accession: [NM\\_001105578](#), [NP\\_001099048](#)

UniProt: [Q6PIF2](#)

## Application Details

Application Notes: Optimal working dilutions should be determined experimentally by the investigator.

Comment: Antigen size: 218 AA

Restrictions: For Research Use only

## Handling

Format: Liquid

Concentration: Lot specific

Buffer: Liquid. Purified antibody supplied in 1x PBS buffer with 0.09 % (w/v) sodium azide and 2 % sucrose.

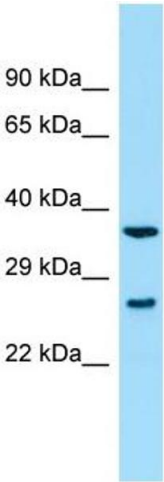
Preservative: Sodium azide

Precaution of Use: This product contains Sodium azide: a POISONOUS AND HAZARDOUS SUBSTANCE which should be handled by trained staff only.

Handling Advice: Avoid repeated freeze-thaw cycles.

Storage: -20 °C

Storage Comment: For short term use, store at 2-8°C up to 1 week. For long term storage, store at -20°C in small aliquots to prevent freeze-thaw cycles.



Western Blotting

**Image 1.** WB Suggested Anti-SYCE2 Antibody Titration: 1.0 ug/ml Positive Control: Fetal kidney