

Datasheet for ABIN2790593

anti-TAS2R50 antibody (C-Term)[Go to Product page](#)**1** Image

Overview

Quantity:	100 µL
Target:	TAS2R50
Binding Specificity:	C-Term
Reactivity:	Human
Host:	Rabbit
Clonality:	Polyclonal
Conjugate:	This TAS2R50 antibody is un-conjugated
Application:	Western Blotting (WB)

Product Details

Immunogen:	The immunogen is a synthetic peptide directed towards the C-terminal region of Human TAS2R50
Sequence:	PFTLSLISFL MLICSLCKHL KKMQLHGEQS QDLSTKVHIK ALQTLISFLL
Predicted Reactivity:	Human: 100%
Characteristics:	This is a rabbit polyclonal antibody against TAS2R50. It was validated on Western Blot.
Purification:	Affinity Purified

Target Details

Target:	TAS2R50
Alternative Name:	TAS2R50 (TAS2R50 Products)

Target Details

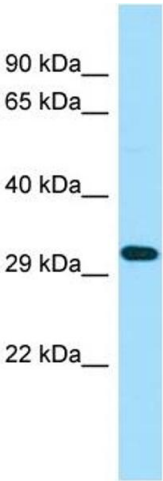
Background:	<p>TAS2R50 belongs to the large TAS2R receptor family. TAS2Rs are expressed on the surface of taste receptor cells and mediate the perception of bitterness through a G protein-coupled second messenger pathway.</p> <p>Alias Symbols: MGC138305, T2R50, T2R51, TAS2R51</p> <p>Protein Size: 299</p>
Molecular Weight:	33 kDa
Gene ID:	259296
NCBI Accession:	NM_176890 , NP_795371
UniProt:	P59544

Application Details

Application Notes:	Optimal working dilutions should be determined experimentally by the investigator.
Comment:	Antigen size: 299 AA
Restrictions:	For Research Use only

Handling

Format:	Liquid
Concentration:	Lot specific
Buffer:	Liquid. Purified antibody supplied in 1x PBS buffer with 0.09 % (w/v) sodium azide and 2 % sucrose.
Preservative:	Sodium azide
Precaution of Use:	This product contains Sodium azide: a POISONOUS AND HAZARDOUS SUBSTANCE which should be handled by trained staff only.
Handling Advice:	Avoid repeated freeze-thaw cycles.
Storage:	-20 °C
Storage Comment:	For short term use, store at 2-8°C up to 1 week. For long term storage, store at -20°C in small aliquots to prevent freeze-thaw cycles.



Western Blotting

Image 1. WB Suggested Anti-TAS2R50 Antibody Titration:
1.0 ug/ml Positive Control: Fetal Lung