

Datasheet for ABIN2790596

anti-TUFT1 antibody (Middle Region)[Go to Product page](#)**1** Image

Overview

Quantity:	100 µL
Target:	TUFT1
Binding Specificity:	Middle Region
Reactivity:	Mouse, Human, Cow, Dog, Guinea Pig, Horse, Pig, Rabbit, Rat, Zebrafish (Danio rerio)
Host:	Rabbit
Clonality:	Polyclonal
Conjugate:	This TUFT1 antibody is un-conjugated
Application:	Western Blotting (WB)

Product Details

Immunogen:	The immunogen is a synthetic peptide directed towards the middle region of Mouse Tuft1
Sequence:	LSRYQREAEQ SNVALQREED RVEQKAAEIE ELQRRLLGME AEHQALLVKV
Predicted Reactivity:	Cow: 86%, Dog: 79%, Guinea Pig: 92%, Horse: 86%, Human: 100%, Mouse: 86%, Pig: 93%, Rabbit: 86%, Rat: 86%, Zebrafish: 75%
Characteristics:	This is a rabbit polyclonal antibody against Tuft1. It was validated on Western Blot.
Purification:	Affinity Purified

Target Details

Target:	TUFT1
Alternative Name:	Tuft1 (TUFT1 Products)

Target Details

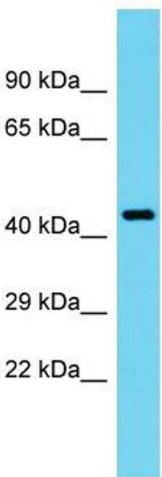
Background:	Tuft1 is involved in the mineralization and structural organization of enamel. Alias Symbols: - Protein Interaction Partner: Srf, Protein Size: 390
Molecular Weight:	43 kDa
Gene ID:	22156
NCBI Accession:	NM_011656 , NP_035786
UniProt:	O08970

Application Details

Application Notes:	Optimal working dilution should be determined by the investigator.
Restrictions:	For Research Use only

Handling

Format:	Liquid
Concentration:	1 mg/mL
Buffer:	Liquid. Purified antibody supplied in 1x PBS buffer with 0.09 % (w/v) sodium azide and 2 % sucrose.
Preservative:	Sodium azide
Precaution of Use:	This product contains Sodium azide: a POISONOUS AND HAZARDOUS SUBSTANCE which should be handled by trained staff only.
Handling Advice:	Avoid repeat freeze-thaw cycles.
Storage:	-20 °C
Storage Comment:	For short term use, store at 2-8°C up to 1 week. For long term storage, store at -20°C in small aliquots to prevent freeze-thaw cycles.



Western Blotting

Image 1.