

Datasheet for ABIN2790600  
**anti-XKR6 antibody (Middle Region)**



[Go to Product page](#)

1 Image

## Overview

Quantity:	100 µL
Target:	XKR6
Binding Specificity:	Middle Region
Reactivity:	Human, Rabbit, Zebrafish (Danio rerio), Cow, Dog, Guinea Pig, Mouse, Rat, Pig
Host:	Rabbit
Clonality:	Polyclonal
Conjugate:	This XKR6 antibody is un-conjugated
Application:	Western Blotting (WB)

## Product Details

Immunogen:	The immunogen is a synthetic peptide directed towards the middle region of Human XKR6
Sequence:	RTMYLGIQSQ RRKEHQRRFY WAMMYEYADV NMLRLLETFL ESAPQLVLQL
Predicted Reactivity:	Cow: 93%, Dog: 93%, Guinea Pig: 93%, Human: 100%, Mouse: 93%, Pig: 100%, Rabbit: 86%, Rat: 93%, Zebrafish: 79%
Characteristics:	This is a rabbit polyclonal antibody against XKR6. It was validated on Western Blot.
Purification:	Affinity Purified

## Target Details

Target:	XKR6
Alternative Name:	XKR6 ( <a href="#">XKR6 Products</a> )

### Target Details

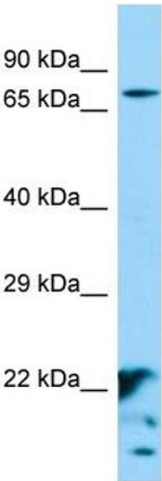
Background:	The function of this protein remains unknown. Alias Symbols: C8orf21, C8orf5, C8orf7, XRG6 Protein Interaction Partner: ELAVL1, Protein Size: 641
Molecular Weight:	70 kDa
Gene ID:	286046
NCBI Accession:	<a href="#">NM_173683</a> , <a href="#">NP_775954</a>
UniProt:	<a href="#">Q5GH73</a>

### Application Details

Application Notes:	Optimal working dilution should be determined by the investigator.
Restrictions:	For Research Use only

### Handling

Format:	Liquid
Concentration:	1 mg/mL
Buffer:	Liquid. Purified antibody supplied in 1x PBS buffer with 0.09 % (w/v) sodium azide and 2 % sucrose.
Preservative:	Sodium azide
Precaution of Use:	This product contains Sodium azide: a POISONOUS AND HAZARDOUS SUBSTANCE which should be handled by trained staff only.
Handling Advice:	Avoid repeat freeze-thaw cycles.
Storage:	-20 °C
Storage Comment:	For short term use, store at 2-8°C up to 1 week. For long term storage, store at -20°C in small aliquots to prevent freeze-thaw cycles.



**Western Blotting**

**Image 1.**