

Datasheet for ABIN2790601  
**anti-XKR6 antibody (C-Term)**



[Go to Product page](#)

1 Image

## Overview

Quantity:	100 µL
Target:	XKR6
Binding Specificity:	C-Term
Reactivity:	Human, Rabbit, Zebrafish (Danio rerio), Cow, Dog, Guinea Pig, Mouse, Rat, Horse
Host:	Rabbit
Clonality:	Polyclonal
Conjugate:	This XKR6 antibody is un-conjugated
Application:	Western Blotting (WB)

## Product Details

Immunogen:	The immunogen is a synthetic peptide directed towards the C-terminal region of Human XKR6
Sequence:	LASYHKLLRD SRDDKKSMSY RGAIQVFWR LFTISSRVIS FALFASIFQL
Predicted Reactivity:	Cow: 100%, Dog: 100%, Guinea Pig: 100%, Horse: 100%, Human: 100%, Mouse: 100%, Rabbit: 100%, Rat: 100%, Zebrafish: 100%
Characteristics:	This is a rabbit polyclonal antibody against XKR6. It was validated on Western Blot.
Purification:	Affinity Purified

## Target Details

Target:	XKR6
Alternative Name:	XKR6 ( <a href="#">XKR6 Products</a> )

## Target Details

Background:	The function of this protein remains unknown. Protein Interaction Partner: ELAVL1, Protein Size: 362
-------------	------------------------------------------------------------------------------------------------------------

Molecular Weight:	39 kDa
-------------------	--------

Gene ID:	286046
----------	--------

## Application Details

Application Notes:	Optimal working dilution should be determined by the investigator.
--------------------	--------------------------------------------------------------------

Restrictions:	For Research Use only
---------------	-----------------------

## Handling

Format:	Liquid
---------	--------

Concentration:	1 mg/mL
----------------	---------

Buffer:	Liquid. Purified antibody supplied in 1x PBS buffer with 0.09 % (w/v) sodium azide and 2 % sucrose.
---------	-----------------------------------------------------------------------------------------------------

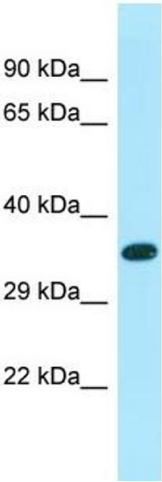
Preservative:	Sodium azide
---------------	--------------

Precaution of Use:	This product contains Sodium azide: a POISONOUS AND HAZARDOUS SUBSTANCE which should be handled by trained staff only.
--------------------	------------------------------------------------------------------------------------------------------------------------

Handling Advice:	Avoid repeat freeze-thaw cycles.
------------------	----------------------------------

Storage:	-20 °C
----------	--------

Storage Comment:	For short term use, store at 2-8°C up to 1 week. For long term storage, store at -20°C in small aliquots to prevent freeze-thaw cycles.
------------------	-----------------------------------------------------------------------------------------------------------------------------------------



**Western Blotting**

**Image 1.**