

Datasheet for ABIN2790613
anti-CAPRIN2 antibody (C-Term)



[Go to Product page](#)

1 Image

Overview

Quantity:	100 µL
Target:	CAPRIN2
Binding Specificity:	C-Term
Reactivity:	Human, Mouse, Rat, Dog, Horse, Cow, Guinea Pig, Rabbit
Host:	Rabbit
Clonality:	Polyclonal
Conjugate:	This CAPRIN2 antibody is un-conjugated
Application:	Western Blotting (WB)

Product Details

Immunogen:	The immunogen is a synthetic peptide directed towards the C-terminal region of Human CAPRIN2
Sequence:	YKRGGTSGGP RANSRAGWSD SSQVSSPERD NETFNSGDSG QGDSRSMTPV
Predicted Reactivity:	Cow: 100%, Dog: 100%, Guinea Pig: 100%, Horse: 100%, Human: 100%, Mouse: 93%, Rabbit: 100%, Rat: 93%
Characteristics:	This is a rabbit polyclonal antibody against CAPRIN2. It was validated on Western Blot.
Purification:	Affinity Purified

Target Details

Target:	CAPRIN2
---------	---------

Target Details

Alternative Name:	CAPRIN2 (CAPRIN2 Products)
Background:	<p>The protein encoded by this gene may be involved in the transitioning of erythroblasts from a highly proliferative state to a terminal phase of differentiation. High level expression of the encoded protein can lead to apoptosis. Several transcript variants encoding different isoforms have been found for this gene.</p> <p>Alias Symbols: C1QDC1, EEG-1, EEG1, FLJ11391, FLJ22569, KIAA1873, MGC102894, MGC134847, MGC134848, caprin-2</p> <p>Protein Interaction Partner: PEX5, LRP5, LRP6, COPS6,</p> <p>Protein Size: 1127</p>
Molecular Weight:	124 kDa
Gene ID:	65981
NCBI Accession:	NM_001002259 , NP_001002259
UniProt:	Q6IMN6

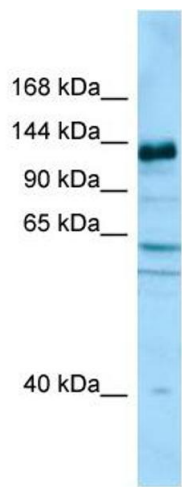
Application Details

Application Notes:	Optimal working dilutions should be determined experimentally by the investigator.
Comment:	Antigen size: 1127 AA
Restrictions:	For Research Use only

Handling

Format:	Liquid
Concentration:	Lot specific
Buffer:	Liquid. Purified antibody supplied in 1x PBS buffer with 0.09 % (w/v) sodium azide and 2 % sucrose.
Preservative:	Sodium azide
Precaution of Use:	This product contains Sodium azide: a POISONOUS AND HAZARDOUS SUBSTANCE which should be handled by trained staff only.
Handling Advice:	Avoid repeated freeze-thaw cycles.
Storage:	-20 °C
Storage Comment:	For short term use, store at 2-8°C up to 1 week. For long term storage, store at -20°C in small

aliquots to prevent freeze-thaw cycles.



Western Blotting

Image 1. WB Suggested Anti-CAPRIN2 Antibody Titration:
1.0 ug/ml Positive Control: Fetal Brain