

Datasheet for ABIN2790615  
**anti-CLEC2A antibody (C-Term)**[Go to Product page](#)

## 1 Image

## Overview

Quantity:	100 µL
Target:	CLEC2A
Binding Specificity:	C-Term
Reactivity:	Human, Cow
Host:	Rabbit
Clonality:	Polyclonal
Conjugate:	This CLEC2A antibody is un-conjugated
Application:	Western Blotting (WB)

## Product Details

Immunogen:	The immunogen is a synthetic peptide directed towards the C-terminal region of Human CLEC2A
Sequence:	HWIGLSRKQG DSWKWTNGTT FNGWFEIIGN GSFAFLSADG VHSSRGFIDI
Predicted Reactivity:	Cow: 86%, Human: 100%
Characteristics:	This is a rabbit polyclonal antibody against CLEC2A. It was validated on Western Blot.
Purification:	Affinity Purified

## Target Details

Target:	CLEC2A
Alternative Name:	CLEC2A ( <a href="#">CLEC2A Products</a> )

## Target Details

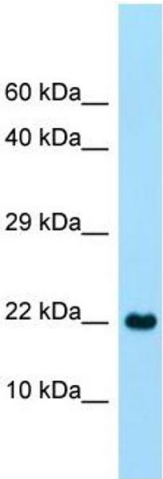
Background:	CLEC2A belongs to the CLEC2 family of activation-induced, natural killer gene complex-encoded C-type lectin-like receptors. Alias Symbols: PILAR, UNQ5792, KACL Protein Size: 174
Molecular Weight:	19 kDa
Gene ID:	387836
NCBI Accession:	<a href="#">NM_001130711</a> , <a href="#">NP_001124183</a>
UniProt:	<a href="#">Q6UVW9</a>

## Application Details

Application Notes:	Optimal working dilutions should be determined experimentally by the investigator.
Comment:	Antigen size: 174 AA
Restrictions:	For Research Use only

## Handling

Format:	Liquid
Concentration:	Lot specific
Buffer:	Liquid. Purified antibody supplied in 1x PBS buffer with 0.09 % (w/v) sodium azide and 2 % sucrose.
Preservative:	Sodium azide
Precaution of Use:	This product contains Sodium azide: a POISONOUS AND HAZARDOUS SUBSTANCE which should be handled by trained staff only.
Handling Advice:	Avoid repeated freeze-thaw cycles.
Storage:	-20 °C
Storage Comment:	For short term use, store at 2-8°C up to 1 week. For long term storage, store at -20°C in small aliquots to prevent freeze-thaw cycles.



Western Blotting

**Image 1.** WB Suggested Anti-CLEC2A Antibody Titration:  
1.0 ug/ml Positive Control: Fetal Heart