

Datasheet for ABIN2790619
anti-COLEC10 antibody (N-Term)



[Go to Product page](#)

1 Image

Overview

Quantity:	100 µL
Target:	COLEC10
Binding Specificity:	N-Term
Reactivity:	Human, Rat, Mouse, Horse, Cow, Guinea Pig, Dog, Rabbit
Host:	Rabbit
Clonality:	Polyclonal
Conjugate:	This COLEC10 antibody is un-conjugated
Application:	Western Blotting (WB)

Product Details

Immunogen:	The immunogen is a synthetic peptide directed towards the N-terminal region of Human COLEC10
Sequence:	IKGELGDMGD QGNIGKTGPI GKKGDKGEKG LLGIPGEKGK AGTVCDCGRY
Predicted Reactivity:	Cow: 100%, Dog: 93%, Guinea Pig: 100%, Horse: 100%, Human: 100%, Mouse: 100%, Rabbit: 93%, Rat: 100%
Characteristics:	This is a rabbit polyclonal antibody against COLEC10. It was validated on Western Blot.
Purification:	Affinity Purified

Target Details

Target:	COLEC10
---------	---------

Target Details

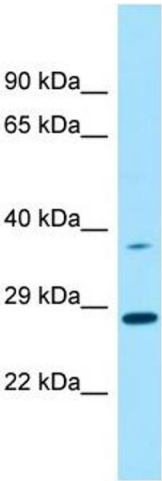
Alternative Name:	COLEC10 (COLEC10 Products)
Background:	<p>This gene encodes a member of the C-lectin family, proteins that possess collagen-like sequences and carbohydrate recognition domains. The other members of this family are secreted proteins and bind to carbohydrate antigens on microorganisms facilitating their recognition and removal. This gene product is a cytosolic protein, a characteristic that suggests that it may have different biological functions than other C-lectins.</p> <p>Alias Symbols: CLL1, MGC118794, MGC118795</p> <p>Protein Size: 277</p>
Molecular Weight:	30 kDa
Gene ID:	10584
NCBI Accession:	NM_006438 , NP_006429
UniProt:	Q9Y6Z7

Application Details

Application Notes:	Optimal working dilutions should be determined experimentally by the investigator.
Comment:	Antigen size: 277 AA
Restrictions:	For Research Use only

Handling

Format:	Liquid
Concentration:	Lot specific
Buffer:	Liquid. Purified antibody supplied in 1x PBS buffer with 0.09 % (w/v) sodium azide and 2 % sucrose.
Preservative:	Sodium azide
Precaution of Use:	This product contains Sodium azide: a POISONOUS AND HAZARDOUS SUBSTANCE which should be handled by trained staff only.
Handling Advice:	Avoid repeated freeze-thaw cycles.
Storage:	-20 °C
Storage Comment:	For short term use, store at 2-8°C up to 1 week. For long term storage, store at -20°C in small aliquots to prevent freeze-thaw cycles.



Western Blotting

Image 1. Host: Rabbit Target Name: COLEC10 Sample Type: U937 Whole Cell lysates Antibody Dilution: 1.0ug/ml