

Datasheet for ABIN2790620  
**anti-CRYGN antibody (C-Term)**[Go to Product page](#)

## 1 Image

## Overview

Quantity:	100 µL
Target:	CRYGN
Binding Specificity:	C-Term
Reactivity:	Human
Host:	Rabbit
Clonality:	Polyclonal
Conjugate:	This CRYGN antibody is un-conjugated
Application:	Western Blotting (WB)

## Product Details

Immunogen:	The immunogen is a synthetic peptide directed towards the C-terminal region of Human CRYGN
Sequence:	SRGWVKNCVN TIKVYGDGAA WSPRSFGAED FQLSSSLQSD QGP EEATTKP
Predicted Reactivity:	Human: 100%
Characteristics:	This is a rabbit polyclonal antibody against CRYGN. It was validated on Western Blot.
Purification:	Affinity Purified

## Target Details

Target:	CRYGN
Alternative Name:	CRYGN ( <a href="#">CRYGN Products</a> )

## Target Details

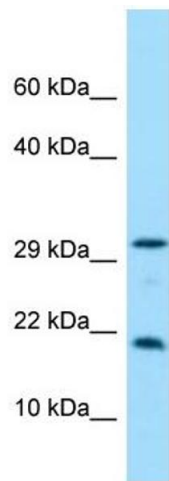
Background:	<p>The beta and gamma crystallins are evolutionarily related families of proteins that are localized to the refractive structure of the eye lens. The protein encoded by this gene is unique in that it has both beta and gamma crystallin protein motifs.</p> <p>Alias Symbols: MGC119042, MGC119043, MGC119044, MGC119045</p> <p>Protein Size: 182</p>
Molecular Weight:	20 kDa
Gene ID:	155051
NCBI Accession:	<a href="#">NM_144727</a> , <a href="#">NP_653328</a>
UniProt:	<a href="#">Q8WXF5</a>

## Application Details

Application Notes:	Optimal working dilutions should be determined experimentally by the investigator.
Comment:	Antigen size: 182 AA
Restrictions:	For Research Use only

## Handling

Format:	Liquid
Concentration:	Lot specific
Buffer:	Liquid. Purified antibody supplied in 1x PBS buffer with 0.09 % (w/v) sodium azide and 2 % sucrose.
Preservative:	Sodium azide
Precaution of Use:	This product contains Sodium azide: a POISONOUS AND HAZARDOUS SUBSTANCE which should be handled by trained staff only.
Handling Advice:	Avoid repeated freeze-thaw cycles.
Storage:	-20 °C
Storage Comment:	For short term use, store at 2-8°C up to 1 week. For long term storage, store at -20°C in small aliquots to prevent freeze-thaw cycles.



Western Blotting

**Image 1.** WB Suggested Anti-CRYGN Antibody Titration:  
1.0 ug/ml Positive Control: Hela Whole cell