



[Go to Product page](#)

Datasheet for ABIN2790624  
**anti-EPN3 antibody (C-Term)**

1 Image

Overview

Quantity:	100 µL
Target:	EPN3
Binding Specificity:	C-Term
Reactivity:	Human, Mouse, Rat, Cow, Rabbit, Dog, Guinea Pig, Horse
Host:	Rabbit
Clonality:	Polyclonal
Conjugate:	This EPN3 antibody is un-conjugated
Application:	Western Blotting (WB)

Product Details

Immunogen:	The immunogen is a synthetic peptide directed towards the C-terminal region of Human EPN3
Sequence:	ESTETKEGLE QALPSGKPSS PVELDLFGDP SPSSKQNGTK EPDALDLGIL
Predicted Reactivity:	Cow: 79%, Dog: 93%, Guinea Pig: 93%, Horse: 93%, Human: 100%, Mouse: 79%, Rabbit: 93%, Rat: 86%
Characteristics:	This is a rabbit polyclonal antibody against EPN3. It was validated on Western Blot.
Purification:	Affinity Purified

Target Details

Target:	EPN3
Alternative Name:	EPN3 ( <a href="#">EPN3 Products</a> )

## Target Details

---

Background: The function of this protein remains unknown.  
Alias Symbols: -  
Protein Interaction Partner: RNF11, LAPTM5, UBC, EHD2, EPN1, EHD1, EPS15,  
Protein Size: 632

---

Molecular Weight: 70 kDa

---

Gene ID: 55040

---

NCBI Accession: [NM\\_017957](#), [NP\\_060427](#)

---

UniProt: [Q9H201](#)

---

## Application Details

---

Application Notes: Optimal working dilutions should be determined experimentally by the investigator.

---

Comment: Antigen size: 632 AA

---

Restrictions: For Research Use only

---

## Handling

---

Format: Liquid

---

Concentration: Lot specific

---

Buffer: Liquid. Purified antibody supplied in 1x PBS buffer with 0.09 % (w/v) sodium azide and 2 % sucrose.

---

Preservative: Sodium azide

---

Precaution of Use: This product contains Sodium azide: a POISONOUS AND HAZARDOUS SUBSTANCE which should be handled by trained staff only.

---

Handling Advice: Avoid repeated freeze-thaw cycles.

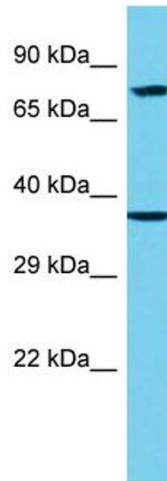
---

Storage: -20 °C

---

Storage Comment: For short term use, store at 2-8°C up to 1 week. For long term storage, store at -20°C in small aliquots to prevent freeze-thaw cycles.

---



### Western Blotting

**Image 1.** Host: Rabbit Target Name: EPN3 Sample Type: 293T Whole Cell lysates Antibody Dilution: 1.0ug/ml