

Datasheet for ABIN2790625
anti-FCGR2C antibody (N-Term)[Go to Product page](#)

2 Images

Overview

Quantity:	100 µL
Target:	FCGR2C
Binding Specificity:	N-Term
Reactivity:	Human, Cow, Guinea Pig, Horse, Rabbit
Host:	Rabbit
Clonality:	Polyclonal
Conjugate:	This FCGR2C antibody is un-conjugated
Application:	Western Blotting (WB)

Product Details

Immunogen:	The immunogen is a synthetic peptide directed towards the N-terminal region of Human FCGR2C
Sequence:	GTHSPESDSI PWFHNGNLIP THTQPSYRFK ANNNDSGEYT CQTGQTSLSLSD
Predicted Reactivity:	Cow: 90%, Guinea Pig: 100%, Horse: 91%, Human: 100%, Rabbit: 91%
Characteristics:	This is a rabbit polyclonal antibody against FCGR2C. It was validated on Western Blot.
Purification:	Affinity Purified

Target Details

Target:	FCGR2C
Alternative Name:	FCGR2C (FCGR2C Products)

Target Details

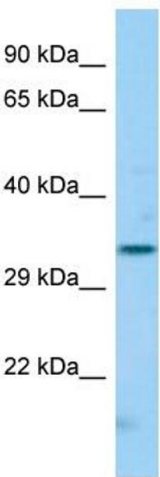
Background:	<p>This gene encodes one of three members of a family of low-affinity immunoglobulin gamma Fc receptors found on the surface of many immune response cells. The encoded protein is a transmembrane glycoprotein and may be involved in phagocytosis and clearing of immune complexes. An allelic polymorphism in this gene results in both coding and non-coding variants.</p> <p>Alias Symbols: CD32, CD32C, CDW32, FCG2, FCRIIC, IGFR2</p> <p>Protein Interaction Partner: ITGA4,</p> <p>Protein Size: 323</p>
Molecular Weight:	35 kDa
Gene ID:	9103
NCBI Accession:	NM_201563 , NP_963857
UniProt:	P31995

Application Details

Application Notes:	Optimal working dilutions should be determined experimentally by the investigator.
Comment:	Antigen size: 323 AA
Restrictions:	For Research Use only

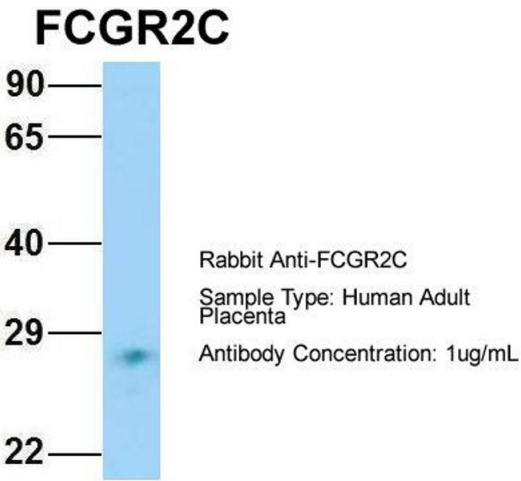
Handling

Format:	Liquid
Concentration:	Lot specific
Buffer:	Liquid. Purified antibody supplied in 1x PBS buffer with 0.09 % (w/v) sodium azide and 2 % sucrose.
Preservative:	Sodium azide
Precaution of Use:	This product contains Sodium azide: a POISONOUS AND HAZARDOUS SUBSTANCE which should be handled by trained staff only.
Handling Advice:	Avoid repeated freeze-thaw cycles.
Storage:	-20 °C
Storage Comment:	For short term use, store at 2-8°C up to 1 week. For long term storage, store at -20°C in small aliquots to prevent freeze-thaw cycles.



Western Blotting

Image 1. Host: Rabbit Target Name: FCGR2C Sample Type: Hela Whole cell lysates Antibody Dilution: 1.0ug/ml



Western Blotting

Image 2. Host: Rabbit Target Name: FCGR2C Sample Type: Human Adult Placenta Antibody Dilution: 1.0ug/ml