

Datasheet for ABIN2790627
anti-GMCL1 antibody (C-Term)[Go to Product page](#)

1 Image

Overview

Quantity:	100 µL
Target:	GMCL1
Binding Specificity:	C-Term
Reactivity:	Human, Mouse, Rat, Cow, Horse, Pig, Guinea Pig, Dog, Rabbit
Host:	Rabbit
Clonality:	Polyclonal
Conjugate:	This GMCL1 antibody is un-conjugated
Application:	Western Blotting (WB)

Product Details

Immunogen:	The immunogen is a synthetic peptide directed towards the C-terminal region of Human GMCL1
Sequence:	QWFAMLR AEQ DSEVGPQEIN KEELEGNSMR CGRKLAKDGE YCWRWTGFNF
Predicted Reactivity:	Cow: 100%, Dog: 100%, Guinea Pig: 86%, Horse: 100%, Human: 100%, Mouse: 100%, Pig: 100%, Rabbit: 100%, Rat: 100%
Characteristics:	This is a rabbit polyclonal antibody against GMCL1. It was validated on Western Blot.
Purification:	Affinity Purified

Target Details

Target:	GMCL1
---------	-------

Target Details

Alternative Name:	GMCL1 (GMCL1 Products)
Background:	<p>This gene encodes a nuclear envelope protein that appears to be involved in spermatogenesis, either directly or by influencing genes that play a more direct role in the process. This multi-exon locus is the homolog of the mouse and drosophila germ cell-less gene but the human genome also contains a single-exon locus on chromosome 5 that contains an open reading frame capable of encoding a highly-related protein.</p> <p>Alias Symbols: BTBD13, GCL, GCL1</p> <p>Protein Interaction Partner: GAGE12B, SUMO1P1, C5orf60, FOXR1, APLF, XAGE3, SNX20, HYKK, FRMD6, CIB3, IL17F, PARD6B, FAM167A, APOL6, MPPE1, GMCL1P1, GMCL1, ZNF250, GRAMD1A, PBXIP1, TRIM54, FAM63A, CCDC25, SHQ1, PARP16, QRIC1, SYT17, SLC15A3, GAGE2E, GAGE12I, CHIC2, RAD54B, MID2, MOR</p> <p>Protein Size: 515</p>
Molecular Weight:	57 kDa
Gene ID:	64395
NCBI Accession:	NM_178439 , NP_848526
UniProt:	Q96IK5

Application Details

Application Notes:	Optimal working dilutions should be determined experimentally by the investigator.
Comment:	Antigen size: 515 AA
Restrictions:	For Research Use only

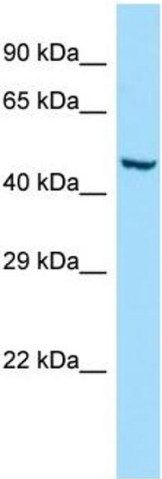
Handling

Format:	Liquid
Concentration:	Lot specific
Buffer:	Liquid. Purified antibody supplied in 1x PBS buffer with 0.09 % (w/v) sodium azide and 2 % sucrose.
Preservative:	Sodium azide
Precaution of Use:	This product contains Sodium azide: a POISONOUS AND HAZARDOUS SUBSTANCE which should be handled by trained staff only.
Handling Advice:	Avoid repeated freeze-thaw cycles.

Handling

Storage:	-20 °C
Storage Comment:	For short term use, store at 2-8°C up to 1 week. For long term storage, store at -20°C in small aliquots to prevent freeze-thaw cycles.

Images



Western Blotting

Image 1. WB Suggested Anti-GMCL1 Antibody Titration: 1.0 ug/ml Positive Control: 293T Whole Cell GMCL1 is supported by BioGPS gene expression data to be expressed in HEK293T