

Datasheet for ABIN2790628
anti-GMCL1 antibody (N-Term)[Go to Product page](#)

1 Image

Overview

Quantity:	100 µL
Target:	GMCL1
Binding Specificity:	N-Term
Reactivity:	Human, Mouse, Rat, Cow, Horse, Pig, Guinea Pig
Host:	Rabbit
Clonality:	Polyclonal
Conjugate:	This GMCL1 antibody is un-conjugated
Application:	Western Blotting (WB)

Product Details

Immunogen:	The immunogen is a synthetic peptide directed towards the N-terminal region of Human GMCL1
Sequence:	HGFCYCAGSH KRKRSSGSFC YCHPDSETDE DEEEGDEQQR LLNTPRRKKL
Predicted Reactivity:	Cow: 85%, Guinea Pig: 77%, Horse: 85%, Human: 100%, Mouse: 77%, Pig: 85%, Rat: 85%
Characteristics:	This is a rabbit polyclonal antibody against GMCL1. It was validated on Western Blot.
Purification:	Affinity Purified

Target Details

Target:	GMCL1
Alternative Name:	GMCL1 (GMCL1 Products)

Target Details

Background:	<p>This gene encodes a nuclear envelope protein that appears to be involved in spermatogenesis, either directly or by influencing genes that play a more direct role in the process. This multi-exon locus is the homolog of the mouse and drosophila germ cell-less gene but the human genome also contains a single-exon locus on chromosome 5 that contains an open reading frame capable of encoding a highly-related protein.</p> <p>Alias Symbols: BTBD13, GCL, GCL1</p> <p>Protein Interaction Partner: GAGE12B, SUMO1P1, C5orf60, FOXR1, APLF, XAGE3, SNX20, HYKK, FRMD6, CIB3, IL17F, PARD6B, FAM167A, APOL6, MPPE1, GMCL1P1, GMCL1, ZNF250, GRAMD1A, PBXIP1, TRIM54, FAM63A, CCDC25, SHQ1, PARP16, QRICH1, SYT17, SLC15A3, GAGE2E, GAGE12I, CHIC2, RAD54B, MID2, MOR</p> <p>Protein Size: 515</p>
-------------	---

Molecular Weight:	57 kDa
-------------------	--------

Gene ID:	64395
----------	-------

NCBI Accession:	NM_178439 , NP_848526
-----------------	---

UniProt:	Q96IK5
----------	------------------------

Application Details

Application Notes:	Optimal working dilutions should be determined experimentally by the investigator.
--------------------	--

Comment:	Antigen size: 515 AA
----------	----------------------

Restrictions:	For Research Use only
---------------	-----------------------

Handling

Format:	Liquid
---------	--------

Concentration:	Lot specific
----------------	--------------

Buffer:	Liquid. Purified antibody supplied in 1x PBS buffer with 0.09 % (w/v) sodium azide and 2 % sucrose.
---------	---

Preservative:	Sodium azide
---------------	--------------

Precaution of Use:	This product contains Sodium azide: a POISONOUS AND HAZARDOUS SUBSTANCE which should be handled by trained staff only.
--------------------	--

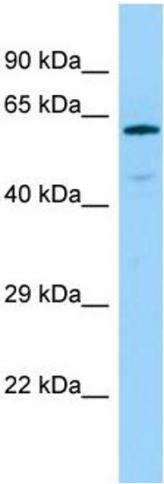
Handling Advice:	Avoid repeated freeze-thaw cycles.
------------------	------------------------------------

Storage:	-20 °C
----------	--------

Handling

Storage Comment: For short term use, store at 2-8°C up to 1 week. For long term storage, store at -20°C in small aliquots to prevent freeze-thaw cycles.

Images



Western Blotting

Image 1. Host: Rabbit Target Name: GMCL1 Sample Type: Fetal Brain lysates Antibody Dilution: 1.0ug/ml