

Datasheet for ABIN2790639
anti-INTU antibody (C-Term)



[Go to Product page](#)

1 Image

Overview

Quantity:	100 µL
Target:	INTU
Binding Specificity:	C-Term
Reactivity:	Human, Dog
Host:	Rabbit
Clonality:	Polyclonal
Conjugate:	This INTU antibody is un-conjugated
Application:	Western Blotting (WB)

Product Details

Immunogen:	The immunogen is a synthetic peptide directed towards the C-terminal region of Human INTU
Sequence:	TLEEVAQLSG SIHPQLIKNF HQCCLSIRAV FQQTLVEEKK KGLNSGDHSD
Predicted Reactivity:	Dog: 79%, Human: 100%
Characteristics:	This is a rabbit polyclonal antibody against INTU. It was validated on Western Blot.
Purification:	Affinity Purified

Target Details

Target:	INTU
Alternative Name:	INTU (INTU Products)
Background:	INTU plays a key role in ciliogenesis and embryonic development. INTU is a regulator of cilia

Target Details

formation by controlling the organization of the apical actin cytoskeleton and the positioning of the basal bodies at the apical cell surface, which in turn is essential for the normal orientation of elongating ciliary microtubules. It plays a key role in definition of cell polarity via its role in ciliogenesis but not via conversion extension and has an indirect effect on hedgehog signaling.

Alias Symbols: FLJ41326, INT, KIAA1284, PDZD6, PDZK6

Protein Size: 942

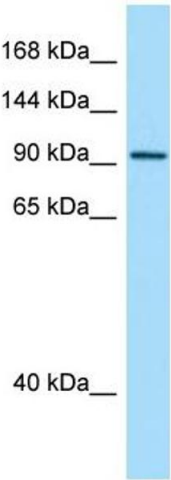
Molecular Weight:	104 kDa
Gene ID:	27152
NCBI Accession:	NM_015693 , NP_056508
UniProt:	Q9ULD6

Application Details

Application Notes:	Optimal working dilutions should be determined experimentally by the investigator.
Comment:	Antigen size: 942 AA
Restrictions:	For Research Use only

Handling

Format:	Liquid
Concentration:	Lot specific
Buffer:	Liquid. Purified antibody supplied in 1x PBS buffer with 0.09 % (w/v) sodium azide and 2 % sucrose.
Preservative:	Sodium azide
Precaution of Use:	This product contains Sodium azide: a POISONOUS AND HAZARDOUS SUBSTANCE which should be handled by trained staff only.
Handling Advice:	Avoid repeated freeze-thaw cycles.
Storage:	-20 °C
Storage Comment:	For short term use, store at 2-8°C up to 1 week. For long term storage, store at -20°C in small aliquots to prevent freeze-thaw cycles.



Western Blotting

Image 1. WB Suggested Anti-INTU Antibody Titration: 1.0 ug/ml Positive Control: Fetal Brain