



Datasheet for ABIN2790643
anti-KPNA7 antibody (C-Term)



[Go to Product page](#)

1 Image

Overview

Quantity:	100 µL
Target:	KPNA7
Binding Specificity:	C-Term
Reactivity:	Human, Cow, Dog, Pig, Saccharomyces cerevisiae
Host:	Rabbit
Clonality:	Polyclonal
Conjugate:	This KPNA7 antibody is un-conjugated
Application:	Western Blotting (WB)

Product Details

Immunogen:	The immunogen is a synthetic peptide directed towards the C-terminal region of Human KPNA7
Sequence:	VKIVLIILDV ISCILQAAEK RSEKENLCLL IEELGGIDRI EALQLHENRQ
Predicted Reactivity:	Cow: 79%, Dog: 93%, Human: 100%, Pig: 79%, Yeast: 90%
Characteristics:	This is a rabbit polyclonal antibody against KPNA7. It was validated on Western Blot.
Purification:	Affinity Purified

Target Details

Target:	KPNA7
Alternative Name:	KPNA7 (KPNA7 Products)
Background:	KPNA7 functions in nuclear protein import.

Target Details

Alias Symbols: -
Protein Interaction Partner: HIST1H1C,
Protein Size: 516

Molecular Weight: 56 kDa

Gene ID: 402569

NCBI Accession: [NM_001145715](#), [NP_001139187](#)

UniProt: [A9QM74](#)

Pathways: [Protein targeting to Nucleus](#)

Application Details

Application Notes: Optimal working dilutions should be determined experimentally by the investigator.

Comment: Antigen size: 516 AA

Restrictions: For Research Use only

Handling

Format: Liquid

Concentration: Lot specific

Buffer: Liquid. Purified antibody supplied in 1x PBS buffer with 0.09 % (w/v) sodium azide and 2 % sucrose.

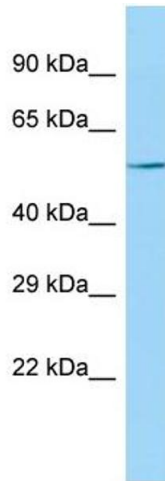
Preservative: Sodium azide

Precaution of Use: This product contains Sodium azide: a POISONOUS AND HAZARDOUS SUBSTANCE which should be handled by trained staff only.

Handling Advice: Avoid repeated freeze-thaw cycles.

Storage: -20 °C

Storage Comment: For short term use, store at 2-8°C up to 1 week. For long term storage, store at -20°C in small aliquots to prevent freeze-thaw cycles.



Western Blotting

Image 1. Host: Rabbit Target Name: KPNA7 Sample Type: U937 Whole Cell lysates Antibody Dilution: 1.0ug/ml