

Datasheet for ABIN2790645
anti-LUZP4 antibody (C-Term)[Go to Product page](#)

1 Image

Overview

Quantity:	100 µL
Target:	LUZP4
Binding Specificity:	C-Term
Reactivity:	Human
Host:	Rabbit
Clonality:	Polyclonal
Conjugate:	This LUZP4 antibody is un-conjugated
Application:	Western Blotting (WB)

Product Details

Immunogen:	The immunogen is a synthetic peptide directed towards the C-terminal region of human LUZP4
Sequence:	TQRDLIATQR DLIVTQRDLV ATERDLINQS GRSHGQSERH QRYSTGKNTI
Predicted Reactivity:	Human: 100%
Characteristics:	This is a rabbit polyclonal antibody against LUZP4. It was validated on Western Blot.
Purification:	Affinity Purified

Target Details

Target:	LUZP4
Alternative Name:	LUZP4 (LUZP4 Products)
Background:	This gene encodes a leucine-zipper protein that was first defined as a cancer testis antigens.

Target Details

The encoded protein is an RNA binding protein that interacts with the mRNA export receptor nuclear RNA export factor 2. Alternate splicing results in multiple transcript variants.

Alias Symbols: CT-8, CT28, CT-28, HOM-TES-85

Protein Size: 231

Molecular Weight: 25 kDa

Gene ID: 51213

NCBI Accession: [NM_016383](#), [NP_057467](#)

UniProt: [B3KSD6](#)

Application Details

Restrictions: For Research Use only

Handling

Format: Liquid

Concentration: 1 mg/mL

Buffer: Liquid. Purified antibody supplied in 1x PBS buffer with 0.09 % (w/v) sodium azide and 2 % sucrose.

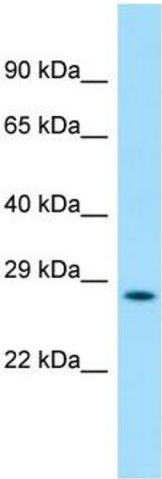
Preservative: Sodium azide

Precaution of Use: This product contains Sodium azide: a POISONOUS AND HAZARDOUS SUBSTANCE which should be handled by trained staff only.

Handling Advice: Avoid repeat freeze-thaw cycles.

Storage: -20 °C

Storage Comment: For short term use, store at 2-8°C up to 1 week. For long term storage, store at -20°C in small aliquots to prevent freeze-thaw cycles.



Western Blotting

Image 1.