

Datasheet for ABIN2790647
anti-LY6G5C antibody (C-Term)[Go to Product page](#)

1 Image

Overview

Quantity:	100 µL
Target:	LY6G5C
Binding Specificity:	C-Term
Reactivity:	Human, Dog, Rabbit, Rat, Cow
Host:	Rabbit
Clonality:	Polyclonal
Conjugate:	This LY6G5C antibody is un-conjugated
Application:	Western Blotting (WB)

Product Details

Immunogen:	The immunogen is a synthetic peptide directed towards the C-terminal region of Human LY6G5C
Sequence:	CITLHKKNSS GSDVMVSDCR SKEQMSDCSN TRTSPVSGFW IFSQYCFLDF
Predicted Reactivity:	Cow: 92%, Dog: 85%, Human: 100%, Rabbit: 77%, Rat: 77%
Characteristics:	This is a rabbit polyclonal antibody against LY6G5C. It was validated on Western Blot.
Purification:	Affinity Purified

Target Details

Target:	LY6G5C
Alternative Name:	LY6G5C (LY6G5C Products)

Target Details

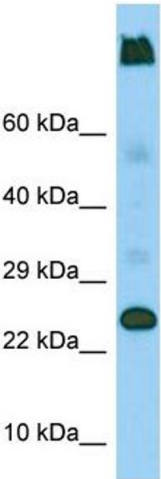
Background:	LY6G5C belongs to a cluster of leukocyte antigen-6 (LY6) genes located in the major histocompatibility complex (MHC) class III region on chromosome 6. Members of the LY6 superfamily typically contain 70 to 80 amino acids, including 8 to 10 cysteines. Most LY6 proteins are attached to the cell surface by a glycosylphosphatidylinositol (GPI) anchor that is directly involved in signal transduction. Protein Size: 229
Molecular Weight:	25 kDa
Gene ID:	80741

Application Details

Restrictions:	For Research Use only
---------------	-----------------------

Handling

Format:	Liquid
Concentration:	1 mg/mL
Buffer:	Liquid. Purified antibody supplied in 1x PBS buffer with 0.09 % (w/v) sodium azide and 2 % sucrose.
Preservative:	Sodium azide
Precaution of Use:	This product contains Sodium azide: a POISONOUS AND HAZARDOUS SUBSTANCE which should be handled by trained staff only.
Handling Advice:	Avoid repeat freeze-thaw cycles.
Storage:	-20 °C
Storage Comment:	For short term use, store at 2-8°C up to 1 week. For long term storage, store at -20°C in small aliquots to prevent freeze-thaw cycles.



Western Blotting

Image 1.