

Datasheet for ABIN2790653

anti-MOSPD1 antibody (Middle Region)[Go to Product page](#)**1** Image

Overview

Quantity:	100 µL
Target:	MOSPD1
Binding Specificity:	Middle Region
Reactivity:	Human, Mouse, Rat, Horse, Cow, Rabbit, Dog, Guinea Pig, Zebrafish (Danio rerio)
Host:	Rabbit
Clonality:	Polyclonal
Conjugate:	This MOSPD1 antibody is un-conjugated
Application:	Western Blotting (WB)

Product Details

Immunogen:	The immunogen is a synthetic peptide directed towards the middle region of Human MOSPD1
Sequence:	SCHYGVIDKF RLQVSEQSQR KALGRKEVVA TLLPSAKEQQ KEEEEKRLKE
Predicted Reactivity:	Cow: 100%, Dog: 100%, Guinea Pig: 100%, Horse: 93%, Human: 100%, Mouse: 100%, Rabbit: 100%, Rat: 100%, Zebrafish: 100%
Characteristics:	This is a rabbit polyclonal antibody against MOSPD1. It was validated on Western Blot.
Purification:	Affinity Purified

Target Details

Target:	MOSPD1
Alternative Name:	MOSPD1 (MOSPD1 Products)

Target Details

Background: The function of this protein remains unknown.
Alias Symbols: DJ473B4
Protein Interaction Partner: UBC,
Protein Size: 213

Molecular Weight: 23 kDa

Gene ID: 56180

NCBI Accession: [NM_019556](#), [NP_062456](#)

UniProt: [Q9UJG1](#)

Application Details

Application Notes: Optimal working dilutions should be determined experimentally by the investigator.

Comment: Antigen size: 213 AA

Restrictions: For Research Use only

Handling

Format: Liquid

Concentration: Lot specific

Buffer: Liquid. Purified antibody supplied in 1x PBS buffer with 0.09 % (w/v) sodium azide and 2 % sucrose.

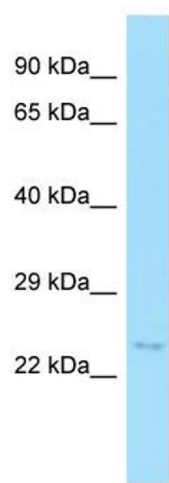
Preservative: Sodium azide

Precaution of Use: This product contains Sodium azide: a POISONOUS AND HAZARDOUS SUBSTANCE which should be handled by trained staff only.

Handling Advice: Avoid repeated freeze-thaw cycles.

Storage: -20 °C

Storage Comment: For short term use, store at 2-8°C up to 1 week. For long term storage, store at -20°C in small aliquots to prevent freeze-thaw cycles.



Western Blotting

Image 1. Host: Rabbit Target Name: MOSPD1 Sample Type: HCT15 Whole Cell lysates Antibody Dilution: 1.0ug/ml