

Datasheet for ABIN2790662
anti-NBPF10 antibody (C-Term)[Go to Product page](#)

1 Image

Overview

Quantity:	100 µL
Target:	NBPF10
Binding Specificity:	C-Term
Reactivity:	Human
Host:	Rabbit
Clonality:	Polyclonal
Conjugate:	This NBPF10 antibody is un-conjugated
Application:	Western Blotting (WB)

Product Details

Immunogen:	The immunogen is a synthetic peptide directed towards the C-terminal region of human NBPF1
Sequence:	VLQDSLRCY STPSS CLEQPDSCQP YGSSFYALEE KHVGFSLDVG EIEK
Predicted Reactivity:	Human: 100%
Characteristics:	This is a rabbit polyclonal antibody against NBPF10. It was validated on Western Blot.
Purification:	Affinity Purified

Target Details

Target:	NBPF10
Alternative Name:	NBPF10 (NBPF10 Products)

Target Details

Background:	<p>This gene is a member of the neuroblastoma breakpoint family (NBPF) which consists of dozens of recently duplicated genes primarily located in segmental duplications on human chromosome 1. This gene family has experienced its greatest expansion within the human lineage and has expanded, to a lesser extent, among primates in general. Members of this gene family are characterized by tandemly repeated copies of DUF1220 protein domains. Gene copy number variations in the human chromosomal region 1q21.1, where most DUF1220 domains are located, have been implicated in a number of developmental and neurogenetic diseases such as microcephaly, macrocephaly, autism, schizophrenia, mental retardation, congenital heart disease, neuroblastoma, and congenital kidney and urinary tract anomalies. Altered expression of some gene family members is associated with several types of cancer. This gene family contains numerous pseudogenes.</p> <p>Alias Symbols: AD2, NBG, AB13, AB14, AB23, NBPF</p> <p>Protein Size: 766</p>
-------------	---

Molecular Weight:	84 kDa
-------------------	--------

Gene ID:	55672
----------	-------

NCBI Accession:	NM_017940 , NP_060410
-----------------	---

UniProt:	Q3BBV0
----------	------------------------

Application Details

Restrictions:	For Research Use only
---------------	-----------------------

Handling

Format:	Liquid
---------	--------

Concentration:	1 mg/mL
----------------	---------

Buffer:	Liquid. Purified antibody supplied in 1x PBS buffer with 0.09 % (w/v) sodium azide and 2 % sucrose.
---------	---

Preservative:	Sodium azide
---------------	--------------

Precaution of Use:	This product contains Sodium azide: a POISONOUS AND HAZARDOUS SUBSTANCE which should be handled by trained staff only.
--------------------	--

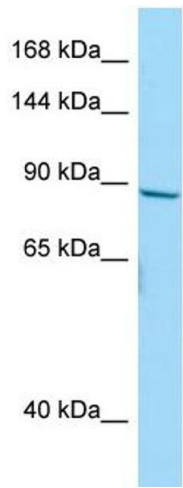
Handling Advice:	Avoid repeat freeze-thaw cycles.
------------------	----------------------------------

Storage:	-20 °C
----------	--------

Handling

Storage Comment: For short term use, store at 2-8°C up to 1 week. For long term storage, store at -20°C in small aliquots to prevent freeze-thaw cycles.

Images



Western Blotting

Image 1.