

Datasheet for ABIN2790670
anti-PATL2 antibody (C-Term)



[Go to Product page](#)

1 Image

Overview

Quantity:	100 µL
Target:	PATL2
Binding Specificity:	C-Term
Reactivity:	Human, Mouse, Rat, Cow, Dog, Guinea Pig, Horse, Rabbit
Host:	Rabbit
Clonality:	Polyclonal
Conjugate:	This PATL2 antibody is un-conjugated
Application:	Western Blotting (WB)

Product Details

Immunogen:	The immunogen is a synthetic peptide directed towards the C-terminal region of Human PATL2
Sequence:	LQLLEIEEGW KYRPPPPCFS EQQSNQVEKL FQTLKTQEQN NLEEAADGFL
Predicted Reactivity:	Cow: 77%, Dog: 86%, Guinea Pig: 79%, Horse: 86%, Human: 100%, Mouse: 93%, Rabbit: 93%, Rat: 93%
Characteristics:	This is a rabbit polyclonal antibody against PATL2. It was validated on Western Blot.
Purification:	Affinity Purified

Target Details

Target:	PATL2
Alternative Name:	PATL2 (PATL2 Products)

Target Details

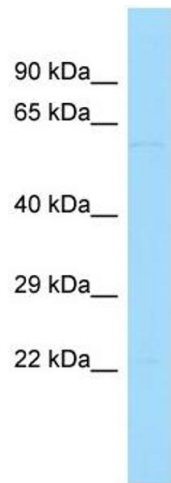
Background:	PATL2 is a RNA-binding protein that acts as a translational repressor. Alias Symbols: - Protein Size: 543
Molecular Weight:	59 kDa
Gene ID:	197135
NCBI Accession:	NM_001145112 , NP_001138584
UniProt:	C9JE40

Application Details

Application Notes:	Optimal working dilutions should be determined experimentally by the investigator.
Comment:	Antigen size: 543 AA
Restrictions:	For Research Use only

Handling

Format:	Liquid
Concentration:	Lot specific
Buffer:	Liquid. Purified antibody supplied in 1x PBS buffer with 0.09 % (w/v) sodium azide and 2 % sucrose.
Preservative:	Sodium azide
Precaution of Use:	This product contains Sodium azide: a POISONOUS AND HAZARDOUS SUBSTANCE which should be handled by trained staff only.
Handling Advice:	Avoid repeated freeze-thaw cycles.
Storage:	-20 °C
Storage Comment:	For short term use, store at 2-8°C up to 1 week. For long term storage, store at -20°C in small aliquots to prevent freeze-thaw cycles.



Western Blotting

Image 1. Host: Rabbit Target Name: PATL2 Sample Type: Hela Whole Cell lysates Antibody Dilution: 1.0ug/ml