



[Go to Product page](#)

Datasheet for ABIN2790683
anti-RAB19 antibody (N-Term)

1 Image

Overview

Quantity:	100 µL
Target:	RAB19
Binding Specificity:	N-Term
Reactivity:	Human, Mouse, Rat, Horse, Rabbit, Cow, Dog, Guinea Pig, Saccharomyces cerevisiae, Zebrafish (Danio rerio)
Host:	Rabbit
Clonality:	Polyclonal
Conjugate:	This RAB19 antibody is un-conjugated
Application:	Western Blotting (WB)

Product Details

Immunogen:	The immunogen is a synthetic peptide directed towards the N-terminal region of Human RAB19
Sequence:	GVYTETQQNT IGVDFTVRSL DIDGKKVKMQ VWDTAGQERF RTITQSYYS
Predicted Reactivity:	Cow: 100%, Dog: 100%, Guinea Pig: 100%, Horse: 100%, Human: 100%, Mouse: 100%, Rabbit: 100%, Rat: 100%, Yeast: 86%, Zebrafish: 100%
Characteristics:	This is a rabbit polyclonal antibody against RAB19. It was validated on Western Blot.
Purification:	Affinity Purified

Target Details

Target:	RAB19
---------	-------

Target Details

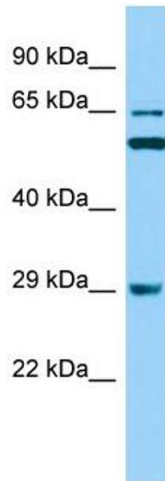
Alternative Name:	RAB19 (RAB19 Products)
Background:	The function of this protein remains unknown. Alias Symbols: RAB19B Protein Size: 264
Molecular Weight:	29 kDa
Gene ID:	401409
NCBI Accession:	NM_001008749 , NP_001008749

Application Details

Application Notes:	Optimal working dilutions should be determined experimentally by the investigator.
Comment:	Antigen size: 264 AA
Restrictions:	For Research Use only

Handling

Format:	Liquid
Concentration:	Lot specific
Buffer:	Liquid. Purified antibody supplied in 1x PBS buffer with 0.09 % (w/v) sodium azide and 2 % sucrose.
Preservative:	Sodium azide
Precaution of Use:	This product contains Sodium azide: a POISONOUS AND HAZARDOUS SUBSTANCE which should be handled by trained staff only.
Handling Advice:	Avoid repeated freeze-thaw cycles.
Storage:	-20 °C
Storage Comment:	For short term use, store at 2-8°C up to 1 week. For long term storage, store at -20°C in small aliquots to prevent freeze-thaw cycles.



Western Blotting

Image 1. Host: Rabbit Target Name: RAB19 Sample Type: RPMI-8226 Whole Cell lysates Antibody Dilution: 1.0ug/ml