

Datasheet for ABIN2790685
anti-RPL18A antibody (C-Term)



[Go to Product page](#)

1 Image

Overview

Quantity:	100 µL
Target:	RPL18A
Binding Specificity:	C-Term
Reactivity:	Human, Mouse, Rat, Cow, Dog, Guinea Pig, Horse, Zebrafish (Danio rerio), Rabbit
Host:	Rabbit
Clonality:	Polyclonal
Conjugate:	This RPL18A antibody is un-conjugated
Application:	Western Blotting (WB)

Product Details

Immunogen:	The immunogen is a synthetic peptide directed towards the C-terminal region of Human RPL18A
Sequence:	IMKVEEIAAS KCRRPAVKQF HDSKIKFPLP HRVLRQHKP RFTTKRPNTF
Predicted Reactivity:	Cow: 100%, Dog: 100%, Guinea Pig: 100%, Horse: 100%, Human: 100%, Mouse: 100%, Rabbit: 86%, Rat: 100%, Zebrafish: 100%
Characteristics:	This is a rabbit polyclonal antibody against RPL18A. It was validated on Western Blot.
Purification:	Affinity Purified

Target Details

Target:	RPL18A
---------	--------

Target Details

Alternative Name:	RPL18A (RPL18A Products)
Background:	<p>Ribosomes, the organelles that catalyze protein synthesis, consist of a small 40S subunit and a large 60S subunit. Together these subunits are composed of 4 RNA species and approximately 80 structurally distinct proteins. This gene encodes a ribosomal protein that is a component of the 60S subunit. The protein belongs to the L18AE family of ribosomal proteins. It is located in the cytoplasm. This gene is co-transcribed with the U68 snoRNA, which is located in its third intron. As is typical for genes encoding ribosomal proteins, there are multiple processed pseudogenes of this gene dispersed through the genome.</p> <p>Protein Interaction Partner: UBC, CEP250, VCP, TUBG1, TP53, TUBGCP4, RPA3, RPA2, RPA1, EED, RNF2, CAPZA2, TARDBP, PAN2, ILF3, SF3B1, UBL4A, PA2G4, ESR1, RPLP0P6, RPL10L, FTSJ3, RPS10P5, NIFK, LUC7L2, NOP58, GNL3, RRS1, U2AF2, DIDO1, SUB1, NOP56, RPL23, NOLC1, RPL14, TPR, RPS27A, RPS2</p> <p>Protein Size: 176</p>
Molecular Weight:	19 kDa
Gene ID:	6142
NCBI Accession:	NM_000980 , NP_000971
UniProt:	Q02543

Application Details

Application Notes:	Optimal working dilutions should be determined experimentally by the investigator.
Comment:	Antigen size: 176 AA
Restrictions:	For Research Use only

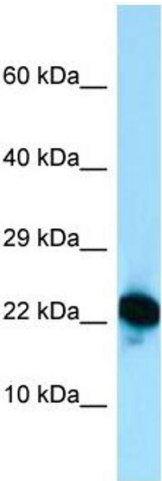
Handling

Format:	Liquid
Concentration:	Lot specific
Buffer:	Liquid. Purified antibody supplied in 1x PBS buffer with 0.09 % (w/v) sodium azide and 2 % sucrose.
Preservative:	Sodium azide
Precaution of Use:	This product contains Sodium azide: a POISONOUS AND HAZARDOUS SUBSTANCE which should be handled by trained staff only.

Handling

Handling Advice:	Avoid repeated freeze-thaw cycles.
Storage:	-20 °C
Storage Comment:	For short term use, store at 2-8°C up to 1 week. For long term storage, store at -20°C in small aliquots to prevent freeze-thaw cycles.

Images



Western Blotting

Image 1. Host: Rabbit Target Name: RPL18A Sample Type: Jurkat Whole Cell lysates Antibody Dilution: 1.0ug/ml