

Datasheet for ABIN2790688
anti-RPS4Y2 antibody (C-Term)[Go to Product page](#)

1 Image

Overview

Quantity:	100 µL
Target:	RPS4Y2
Binding Specificity:	C-Term
Reactivity:	Horse, Human, Mouse, Cow, Rat, Guinea Pig, Zebrafish (Danio rerio), Dog, Goat, Rabbit
Host:	Rabbit
Clonality:	Polyclonal
Conjugate:	This RPS4Y2 antibody is un-conjugated
Application:	Western Blotting (WB)

Product Details

Immunogen:	The immunogen is a synthetic peptide directed towards the C-terminal region of Human RPS4Y2
Sequence:	NGNSFATRIS NIFVINGNGNK PWISLPRGKG IRLTIAEERD KRLAAKQSSG
Predicted Reactivity:	Cow: 100%, Dog: 100%, Goat: 93%, Guinea Pig: 100%, Horse: 100%, Human: 100%, Mouse: 100%, Rabbit: 100%, Rat: 100%, Zebrafish: 100%
Characteristics:	This is a rabbit polyclonal antibody against RPS4Y2. It was validated on Western Blot.
Purification:	Affinity Purified

Target Details

Target:	RPS4Y2
---------	--------

Target Details

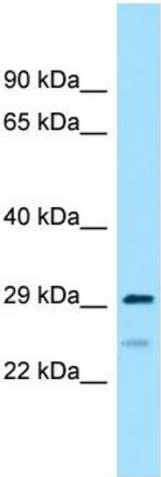
Alternative Name:	RPS4Y2 (RPS4Y2 Products)
Background:	The function of this protein remains unknown. Alias Symbols: RPS4Y2P Protein Interaction Partner: UBC, Protein Size: 263
Molecular Weight:	29 kDa
Gene ID:	140032
NCBI Accession:	NM_001039567 , NP_001034656
UniProt:	Q8TD47

Application Details

Application Notes:	Optimal working dilutions should be determined experimentally by the investigator.
Comment:	Antigen size: 263 AA
Restrictions:	For Research Use only

Handling

Format:	Liquid
Concentration:	Lot specific
Buffer:	Liquid. Purified antibody supplied in 1x PBS buffer with 0.09 % (w/v) sodium azide and 2 % sucrose.
Preservative:	Sodium azide
Precaution of Use:	This product contains Sodium azide: a POISONOUS AND HAZARDOUS SUBSTANCE which should be handled by trained staff only.
Handling Advice:	Avoid repeated freeze-thaw cycles.
Storage:	-20 °C
Storage Comment:	For short term use, store at 2-8°C up to 1 week. For long term storage, store at -20°C in small aliquots to prevent freeze-thaw cycles.



Western Blotting

Image 1. WB Suggested Anti-RPS4Y2 Antibody Titration:
1.0 ug/ml Positive Control: 721_B Whole Cell