

Datasheet for ABIN2790691  
**anti-RSPH9 antibody (Middle Region)**[Go to Product page](#)

## 1 Image

## Overview

|                      |   |
|----------------------|---|
| Quantity:            | 100 µL  |
| Target:              | RSPH9   |
| Binding Specificity: | Middle Region                                   |
| Reactivity:          | Human, Mouse, Rat, Pig, Cow, Rabbit, Dog, Horse |
| Host:                | Rabbit  |
| Clonality:           | Polyclonal                                      |
| Conjugate:           | This RSPH9 antibody is un-conjugated            |
| Application:         | Western Blotting (WB)                           |

## Product Details

|                       |  |
|-----------------------|--|
| Immunogen:            | The immunogen is a synthetic peptide directed towards the middle region of Human RSPH9     |
| Sequence:             | VKGRFMGDPS YEYEHTELQK VNEGEKVFEE EIVVQIKEET RLVSVIDQID                                     |
| Predicted Reactivity: | Cow: 100%, Dog: 86%, Horse: 86%, Human: 100%, Mouse: 93%, Pig: 100%, Rabbit: 79%, Rat: 79% |
| Characteristics:      | This is a rabbit polyclonal antibody against RSPH9. It was validated on Western Blot.      |
| Purification:         | Affinity Purified  |

## Target Details

|                   |  |
|-------------------|--|
| Target:           | RSPH9  |
| Alternative Name: | RSPH9 ( <a href="#">RSPH9 Products</a> )   |
| Background:       | This gene encodes a protein thought to be a component of the radial spoke head in motile cilia |

## Target Details

and flagella. Mutations in this gene are associated with primary ciliary dyskinesia 12. Alternative splicing results in multiple transcript variants.

Alias Symbols: C6orf206, CILD12, FLJ30845, MRPS18AL1

Protein Interaction Partner: HMG20A, PNMA1, HECW2,

Protein Size: 276

Molecular Weight: 30 kDa

Gene ID: 221421

NCBI Accession: [NM\\_152732](#), [NP\\_689945](#)

UniProt: [Q9H1X1](#)

## Application Details

Application Notes: Optimal working dilutions should be determined experimentally by the investigator.

Comment: Antigen size: 276 AA

Restrictions: For Research Use only

## Handling

Format: Liquid

Concentration: Lot specific

Buffer: Liquid. Purified antibody supplied in 1x PBS buffer with 0.09 % (w/v) sodium azide and 2 % sucrose.

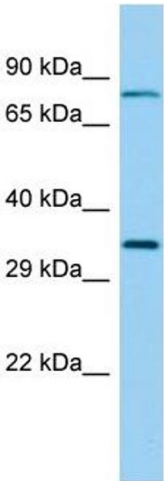
Preservative: Sodium azide

Precaution of Use: This product contains Sodium azide: a POISONOUS AND HAZARDOUS SUBSTANCE which should be handled by trained staff only.

Handling Advice: Avoid repeated freeze-thaw cycles.

Storage: -20 °C

Storage Comment: For short term use, store at 2-8°C up to 1 week. For long term storage, store at -20°C in small aliquots to prevent freeze-thaw cycles.



Western Blotting

**Image 1.** Host: Rabbit Target Name: RSPH9 Sample Type: Fetal Lung lysates Antibody Dilution: 1.0ug/ml