



Datasheet for ABIN2790692  
**anti-RSPH9 antibody (N-Term)**



[Go to Product page](#)

1 Image

Overview

Quantity:	100 µL
Target:	RSPH9
Binding Specificity:	N-Term
Reactivity:	Human, Mouse, Rat, Pig, Cow, Rabbit, Guinea Pig
Host:	Rabbit
Clonality:	Polyclonal
Conjugate:	This RSPH9 antibody is un-conjugated
Application:	Western Blotting (WB)

Product Details

Immunogen:	The immunogen is a synthetic peptide directed towards the N-terminal region of Human RSPH9
Sequence:	GLVADYYIAQ GLSEDQLAPR KTLYSLNCTE WSLPPATEE MVAQSSVVKG
Predicted Reactivity:	Cow: 93%, Guinea Pig: 93%, Human: 100%, Mouse: 100%, Pig: 100%, Rabbit: 93%, Rat: 100%
Characteristics:	This is a rabbit polyclonal antibody against RSPH9. It was validated on Western Blot.
Purification:	Affinity Purified

Target Details

Target:	RSPH9
Alternative Name:	RSPH9 ( <a href="#">RSPH9 Products</a> )

## Target Details

---

Background:	<p>This gene encodes a protein thought to be a component of the radial spoke head in motile cilia and flagella. Mutations in this gene are associated with primary ciliary dyskinesia 12. Alternative splicing results in multiple transcript variants.</p> <p>Alias Symbols: C6orf206, CILD12, FLJ30845, MRPS18AL1</p> <p>Protein Interaction Partner: HMG20A, PNMA1, HECW2,</p> <p>Protein Size: 306</p>
Molecular Weight:	33 kDa
Gene ID:	221421
NCBI Accession:	<a href="#">NM_001193341</a> , <a href="#">NP_001180270</a>
UniProt:	<a href="#">Q9H1X1</a>

## Application Details

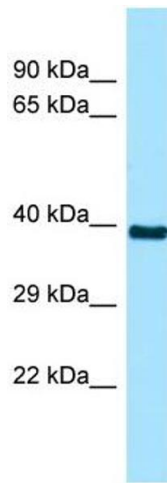
---

Application Notes:	Optimal working dilutions should be determined experimentally by the investigator.
Comment:	Antigen size: 306 AA
Restrictions:	For Research Use only

## Handling

---

Format:	Liquid
Concentration:	Lot specific
Buffer:	Liquid. Purified antibody supplied in 1x PBS buffer with 0.09 % (w/v) sodium azide and 2 % sucrose.
Preservative:	Sodium azide
Precaution of Use:	This product contains Sodium azide: a POISONOUS AND HAZARDOUS SUBSTANCE which should be handled by trained staff only.
Handling Advice:	Avoid repeated freeze-thaw cycles.
Storage:	-20 °C
Storage Comment:	For short term use, store at 2-8°C up to 1 week. For long term storage, store at -20°C in small aliquots to prevent freeze-thaw cycles.



### Western Blotting

**Image 1.** WB Suggested Anti-RSPH9 Antibody Titration: 1.0 ug/ml Positive Control: 721\_B Whole Cell