

Datasheet for ABIN2790701
anti-SKAP2 antibody (Middle Region)



[Go to Product page](#)

1 Image

Overview

Quantity:	100 µL
Target:	SKAP2
Binding Specificity:	Middle Region
Reactivity:	Human, Mouse, Rat, Dog, Cow, Pig, Rabbit, Horse, Guinea Pig, Zebrafish (Danio rerio)
Host:	Rabbit
Clonality:	Polyclonal
Conjugate:	This SKAP2 antibody is un-conjugated
Application:	Western Blotting (WB)

Product Details

Immunogen:	The immunogen is a synthetic peptide directed towards the middle region of Human SKAP2
Sequence:	FEWQKRWCAL SKTVFYYYGS DKDKQQKGEF AIDGYSVRMN NTLRKDGKKD
Predicted Reactivity:	Cow: 100%, Dog: 100%, Guinea Pig: 93%, Horse: 100%, Human: 100%, Mouse: 100%, Pig: 100%, Rabbit: 100%, Rat: 100%, Zebrafish: 93%
Characteristics:	This is a rabbit polyclonal antibody against SKAP2. It was validated on Western Blot.
Purification:	Affinity Purified

Target Details

Target:	SKAP2
Alternative Name:	SKAP2 (SKAP2 Products)

Target Details

Background:	<p>The protein encoded by this gene belongs to the src family kinases. This protein is similar to the src kinase associated phosphoprotein 1. It is an adaptor protein that is thought to play an essential role in the src signaling pathway in various cells. It inhibits PTK2B/RAFTK activity and regulates alpha-synuclein phosphorylation.</p> <p>Alias Symbols: MGC10411, MGC33304, PRAP, RA70, SAPS, SCAP2, SKAP-HOM, SKAP55R</p> <p>Protein Interaction Partner: APP, SRC, GRB2, FYN, PTK2B, FASLG, KHDRBS1, UBC, PRAM1, SKAP2, FYB, TGFBR1, LYN, HCK,</p> <p>Protein Size: 359</p>
-------------	---

Molecular Weight:	39 kDa
-------------------	--------

Gene ID:	8935
----------	------

NCBI Accession:	NM_003930 , NP_003921
-----------------	---

UniProt:	O75563
----------	------------------------

Application Details

Application Notes:	Optimal working dilutions should be determined experimentally by the investigator.
--------------------	--

Comment:	Antigen size: 359 AA
----------	----------------------

Restrictions:	For Research Use only
---------------	-----------------------

Handling

Format:	Liquid
---------	--------

Concentration:	Lot specific
----------------	--------------

Buffer:	Liquid. Purified antibody supplied in 1x PBS buffer with 0.09 % (w/v) sodium azide and 2 % sucrose.
---------	---

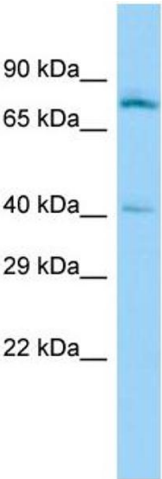
Preservative:	Sodium azide
---------------	--------------

Precaution of Use:	This product contains Sodium azide: a POISONOUS AND HAZARDOUS SUBSTANCE which should be handled by trained staff only.
--------------------	--

Handling Advice:	Avoid repeated freeze-thaw cycles.
------------------	------------------------------------

Storage:	-20 °C
----------	--------

Storage Comment:	For short term use, store at 2-8°C up to 1 week. For long term storage, store at -20°C in small aliquots to prevent freeze-thaw cycles.
------------------	---



Western Blotting

Image 1. Host: Rabbit Target Name: SKAP2 Sample Type: PANC1 Whole Cell lysates Antibody Dilution: 1.0ug/ml