

Datasheet for ABIN2790702  
**anti-SLFN5 antibody (N-Term)**[Go to Product page](#)

## 1 Image

## Overview

Quantity:	100 µL
Target:	SLFN5
Binding Specificity:	N-Term
Reactivity:	Human
Host:	Rabbit
Clonality:	Polyclonal
Conjugate:	This SLFN5 antibody is un-conjugated
Application:	Western Blotting (WB)

## Product Details

Immunogen:	The immunogen is a synthetic peptide directed towards the N-terminal region of Human SLFN5
Sequence:	VDAGKVTLTGT QQRQEMDPRL REKQNEILR AVCALLNSGG GIIKAEIENK
Predicted Reactivity:	Human: 100%
Characteristics:	This is a rabbit polyclonal antibody against SLFN5. It was validated on Western Blot.
Purification:	Affinity Purified

## Target Details

Target:	SLFN5
Alternative Name:	SLFN5 ( <a href="#">SLFN5 Products</a> )
Background:	SLFN5 may have a role in hematopoietic cell differentiation.

## Target Details

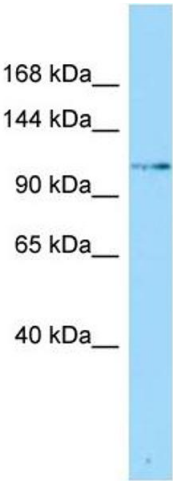
	Alias Symbols: - Protein Interaction Partner: UBC, SOX2, NOTCH1, OXSR1, SUMO2, Protein Size: 891
Molecular Weight:	98 kDa
Gene ID:	162394
NCBI Accession:	<a href="#">NM_144975</a> , <a href="#">NP_659412</a>
UniProt:	<a href="#">Q08AF3</a>

## Application Details

Application Notes:	Optimal working dilutions should be determined experimentally by the investigator.
Comment:	Antigen size: 891 AA
Restrictions:	For Research Use only

## Handling

Format:	Liquid
Concentration:	Lot specific
Buffer:	Liquid. Purified antibody supplied in 1x PBS buffer with 0.09 % (w/v) sodium azide and 2 % sucrose.
Preservative:	Sodium azide
Precaution of Use:	This product contains Sodium azide: a POISONOUS AND HAZARDOUS SUBSTANCE which should be handled by trained staff only.
Handling Advice:	Avoid repeated freeze-thaw cycles.
Storage:	-20 °C
Storage Comment:	For short term use, store at 2-8°C up to 1 week. For long term storage, store at -20°C in small aliquots to prevent freeze-thaw cycles.



Western Blotting

**Image 1.** Host: Rabbit Target Name: SLFN5 Sample Type: Fetal Heart lysates Antibody Dilution: 1.0ug/ml