

Datasheet for ABIN2790703
anti-SNX30 antibody (Middle Region)[Go to Product page](#)

1 Image

Overview

| | |
|----------------------|---|
| Quantity: | 100 µL |
| Target: | SNX30 |
| Binding Specificity: | Middle Region |
| Reactivity: | Human, Mouse, Cow, Dog, Guinea Pig, Horse, Rabbit, Rat, Zebrafish (Danio rerio) |
| Host: | Rabbit |
| Clonality: | Polyclonal |
| Conjugate: | This SNX30 antibody is un-conjugated |
| Application: | Western Blotting (WB) |

Product Details

| | |
|-----------------------|---|
| Immunogen: | The immunogen is a synthetic peptide directed towards the middle region of Mouse Snx30 |
| Sequence: | VSACIGNCST ALEELTDDIT EEFLPVLREY VLYSDSMKGV LKKRDQVQAE |
| Predicted Reactivity: | Cow: 100%, Dog: 100%, Guinea Pig: 100%, Horse: 100%, Human: 100%, Mouse: 93%, Rabbit: 100%, Rat: 100%, Zebrafish: 93% |
| Characteristics: | This is a rabbit polyclonal antibody against Snx30. It was validated on Western Blot. |
| Purification: | Affinity Purified |

Target Details

| | |
|-------------------|--|
| Target: | SNX30 |
| Alternative Name: | Snx30 (SNX30 Products) |

Target Details

Background: Snx30 may be involved in several stages of intracellular trafficking.
Alias Symbols: 4732481H14Rik, C030041J06Rik
Protein Size: 437

Molecular Weight: 49 kDa

Gene ID: 209131

NCBI Accession: [NM_172468](#), [NP_766056](#)

UniProt: [Q8CE50](#)

Application Details

Application Notes: Optimal working dilution should be determined by the investigator.

Restrictions: For Research Use only

Handling

Format: Liquid

Concentration: 1 mg/mL

Buffer: Liquid. Purified antibody supplied in 1x PBS buffer with 0.09 % (w/v) sodium azide and 2 % sucrose.

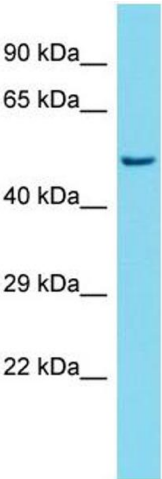
Preservative: Sodium azide

Precaution of Use: This product contains Sodium azide: a POISONOUS AND HAZARDOUS SUBSTANCE which should be handled by trained staff only.

Handling Advice: Avoid repeat freeze-thaw cycles.

Storage: -20 °C

Storage Comment: For short term use, store at 2-8°C up to 1 week. For long term storage, store at -20°C in small aliquots to prevent freeze-thaw cycles.



Western Blotting

Image 1.