

Datasheet for ABIN2790708
anti-STK35 antibody (N-Term)



[Go to Product page](#)

1 Image

Overview

Quantity:	100 µL
Target:	STK35
Binding Specificity:	N-Term
Reactivity:	Human, Rat, Dog, Pig, Rabbit
Host:	Rabbit
Clonality:	Polyclonal
Conjugate:	This STK35 antibody is un-conjugated
Application:	Western Blotting (WB)

Product Details

Immunogen:	The immunogen is a synthetic peptide directed towards the N-terminal region of Human STK35
Sequence:	PPRPRAGR RD EAGGARAAPL LLPPPPAAME TGKDGARRGT QSPERKRRSP
Predicted Reactivity:	Dog: 86%, Human: 100%, Pig: 93%, Rabbit: 86%, Rat: 92%
Characteristics:	This is a rabbit polyclonal antibody against STK35. It was validated on Western Blot.
Purification:	Affinity Purified

Target Details

Target:	STK35
Alternative Name:	STK35 (STK35 Products)
Background:	The protein encoded by this gene is a kinase that is predominantly found in the nucleus.

Target Details

However, it can interact with PDLIM1/CLP-36 in the cytoplasm and localize to actin stress fibers. The encoded protein may be a regulator of actin stress fibers in nonmuscle cells.

Alias Symbols: CLIK1, STK35L1

Protein Interaction Partner: ELAVL1, UBC, STK35, PDLIM1, SMURF1, BMPR1B, SMAD4, TGFB1,

Protein Size: 534

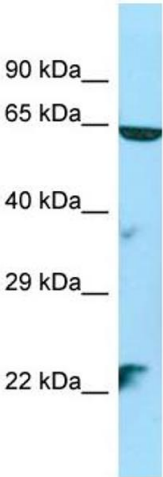
Molecular Weight:	58 kDa
Gene ID:	140901
NCBI Accession:	NM_080836 , NP_543026
UniProt:	Q8TDR2

Application Details

Application Notes:	Optimal working dilutions should be determined experimentally by the investigator.
Comment:	Antigen size: 534 AA
Restrictions:	For Research Use only

Handling

Format:	Liquid
Concentration:	Lot specific
Buffer:	Liquid. Purified antibody supplied in 1x PBS buffer with 0.09 % (w/v) sodium azide and 2 % sucrose.
Preservative:	Sodium azide
Precaution of Use:	This product contains Sodium azide: a POISONOUS AND HAZARDOUS SUBSTANCE which should be handled by trained staff only.
Handling Advice:	Avoid repeated freeze-thaw cycles.
Storage:	-20 °C
Storage Comment:	For short term use, store at 2-8°C up to 1 week. For long term storage, store at -20°C in small aliquots to prevent freeze-thaw cycles.



Western Blotting

Image 1. WB Suggested Anti-STK35 Antibody Titration: 1.0 ug/ml Positive Control: HepG2 Whole Cell