

Datasheet for ABIN2790709

**anti-SUCNR1 antibody (Middle Region)**[Go to Product page](#)**1** Image

## Overview

Quantity:	100 µL
Target:	SUCNR1
Binding Specificity:	Middle Region
Reactivity:	Human, Horse
Host:	Rabbit
Clonality:	Polyclonal
Conjugate:	This SUCNR1 antibody is un-conjugated
Application:	Western Blotting (WB)

## Product Details

Immunogen:	The immunogen is a synthetic peptide directed towards the middle region of Human SUCNR1
Sequence:	INPVITDNGT TCNDFASSGD PNYNLIYSMC LTLLGFLIPL FVMCFFYYKI
Predicted Reactivity:	Horse: 77%, Human: 100%
Characteristics:	This is a rabbit polyclonal antibody against SUCNR1. It was validated on Western Blot.
Purification:	Affinity Purified

## Target Details

Target:	SUCNR1
Alternative Name:	SUCNR1 ( <a href="#">SUCNR1 Products</a> )
Background:	This gene encodes a G-protein-coupled receptor for succinate, an intermediate molecule of the

## Target Details

citric acid cycle. It is involved in the promotion of hematopoietic progenitor cell development, and it has a potential role in renovascular hypertension which has known correlations to renal failure, diabetes and atherosclerosis.

Alias Symbols: GPR91

Protein Size: 334

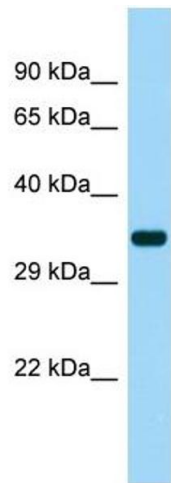
Molecular Weight:	37 kDa
Gene ID:	56670
NCBI Accession:	<a href="#">NM_033050</a> , <a href="#">NP_149039</a>
UniProt:	<a href="#">Q9BXA5</a>

## Application Details

Application Notes:	Optimal working dilutions should be determined experimentally by the investigator.
Comment:	Antigen size: 334 AA
Restrictions:	For Research Use only

## Handling

Format:	Liquid
Concentration:	Lot specific
Buffer:	Liquid. Purified antibody supplied in 1x PBS buffer with 0.09 % (w/v) sodium azide and 2 % sucrose.
Preservative:	Sodium azide
Precaution of Use:	This product contains Sodium azide: a POISONOUS AND HAZARDOUS SUBSTANCE which should be handled by trained staff only.
Handling Advice:	Avoid repeated freeze-thaw cycles.
Storage:	-20 °C
Storage Comment:	For short term use, store at 2-8°C up to 1 week. For long term storage, store at -20°C in small aliquots to prevent freeze-thaw cycles.



Western Blotting

**Image 1.** Host: Rabbit Target Name: SUCNR1 Sample Type: Fetal Heart lysates Antibody Dilution: 1.0ug/ml