

Datasheet for ABIN2790713
anti-SLC35G2 antibody (C-Term)[Go to Product page](#)

1 Image

Overview

Quantity:	100 µL
Target:	SLC35G2
Binding Specificity:	C-Term
Reactivity:	Human, Cow, Dog, Guinea Pig, Horse, Mouse, Rat, Zebrafish (Danio rerio)
Host:	Rabbit
Clonality:	Polyclonal
Conjugate:	This SLC35G2 antibody is un-conjugated
Application:	Western Blotting (WB)

Product Details

Immunogen:	The immunogen is a synthetic peptide directed towards the C-terminal region of Human SLC35G2
Sequence:	LQLLVLIHFP SIYDVFGGVI IMISVFLAG YKLYWRNLRK QDYQEILDSP
Predicted Reactivity:	Cow: 93%, Dog: 93%, Guinea Pig: 93%, Horse: 93%, Human: 100%, Mouse: 79%, Rat: 93%, Zebrafish: 79%
Characteristics:	This is a rabbit polyclonal antibody against SLC35G2. It was validated on Western Blot.
Purification:	Affinity Purified

Target Details

Target:	SLC35G2
---------	---------

Target Details

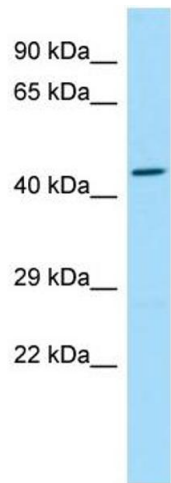
Alternative Name:	SLC35G2 (SLC35G2 Products)
Background:	The function of this protein remains unknown. Alias Symbols: DKFZp564K2464, MGC3295 Protein Interaction Partner: ACAP3, SEMA3F, Protein Size: 412
Molecular Weight:	45 kDa
Gene ID:	80723
NCBI Accession:	NM_025246 , NP_079522
UniProt:	Q8TBE7

Application Details

Application Notes:	Optimal working dilutions should be determined experimentally by the investigator.
Comment:	Antigen size: 412 AA
Restrictions:	For Research Use only

Handling

Format:	Liquid
Concentration:	Lot specific
Buffer:	Liquid. Purified antibody supplied in 1x PBS buffer with 0.09 % (w/v) sodium azide and 2 % sucrose.
Preservative:	Sodium azide
Precaution of Use:	This product contains Sodium azide: a POISONOUS AND HAZARDOUS SUBSTANCE which should be handled by trained staff only.
Handling Advice:	Avoid repeated freeze-thaw cycles.
Storage:	-20 °C
Storage Comment:	For short term use, store at 2-8°C up to 1 week. For long term storage, store at -20°C in small aliquots to prevent freeze-thaw cycles.



Western Blotting

Image 1. WB Suggested Anti-SLC35G2 Antibody Titration:
1.0 ug/ml Positive Control: Fetal Heart