

Datasheet for ABIN2790716  
**anti-ACTR6 antibody (C-Term)**[Go to Product page](#)

## 1 Image

## Overview

Quantity:	100 µL
Target:	ACTR6
Binding Specificity:	C-Term
Reactivity:	Human, Mouse, Rat, Cow, Dog, Horse, Pig, Rabbit, Guinea Pig
Host:	Rabbit
Clonality:	Polyclonal
Conjugate:	This ACTR6 antibody is un-conjugated
Application:	Western Blotting (WB)

## Product Details

Immunogen:	The immunogen is a synthetic peptide directed towards the C-terminal region of Human ACTR6
Sequence:	TIKKGFCCKPR EEMVLSGKYK SGEQILRLAN ERFVPEILF NPSDIGIQEM
Predicted Reactivity:	Cow: 100%, Dog: 100%, Guinea Pig: 86%, Horse: 100%, Human: 100%, Mouse: 100%, Pig: 100%, Rabbit: 100%, Rat: 100%
Characteristics:	This is a rabbit polyclonal antibody against ACTR6. It was validated on Western Blot.
Purification:	Affinity Purified

## Target Details

Target:	ACTR6
Alternative Name:	ACTR6 ( <a href="#">ACTR6 Products</a> )

## Target Details

Background: The function of this protein remains unknown.  
Alias Symbols: ARP6, CDA12, FLJ13433, HSPC281, MSTP136, hARP6, hARPX  
Protein Interaction Partner: H2AFZ, ZNHIT1, UBC, RUVBL2,  
Protein Size: 396

Molecular Weight: 44 kDa

Gene ID: 64431

NCBI Accession: [NM\\_022496](#), [NP\\_071941](#)

UniProt: [Q9GZN1](#)

## Application Details

Application Notes: Optimal working dilutions should be determined experimentally by the investigator.

Comment: Antigen size: 396 AA

Restrictions: For Research Use only

## Handling

Format: Liquid

Concentration: Lot specific

Buffer: Liquid. Purified antibody supplied in 1x PBS buffer with 0.09 % (w/v) sodium azide and 2 % sucrose.

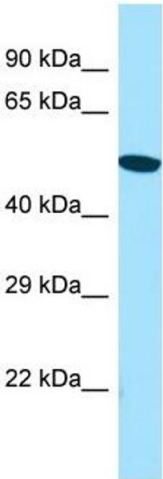
Preservative: Sodium azide

Precaution of Use: This product contains Sodium azide: a POISONOUS AND HAZARDOUS SUBSTANCE which should be handled by trained staff only.

Handling Advice: Avoid repeated freeze-thaw cycles.

Storage: -20 °C

Storage Comment: For short term use, store at 2-8°C up to 1 week. For long term storage, store at -20°C in small aliquots to prevent freeze-thaw cycles.



Western Blotting

**Image 1.** WB Suggested Anti-ACTR6 Antibody Titration: 1.0 ug/ml Positive Control: Jurkat Whole Cell