

Datasheet for ABIN2790719

**anti-ALG10B antibody (Middle Region)**[Go to Product page](#)**1** Image

## Overview

Quantity:	100 µL
Target:	ALG10B
Binding Specificity:	Middle Region
Reactivity:	Human, Dog, Horse, Rat, Pig
Host:	Rabbit
Clonality:	Polyclonal
Conjugate:	This ALG10B antibody is un-conjugated
Application:	Western Blotting (WB)

## Product Details

Immunogen:	The immunogen is a synthetic peptide directed towards the middle region of Human ALG10B
Sequence:	GFCGFMFRQT NIIWAVFCAG NVIAQKLTEA WKTELQKKED RLPIIKGPFA
Predicted Reactivity:	Dog: 87%, Horse: 80%, Human: 100%, Pig: 87%, Rat: 80%
Characteristics:	This is a rabbit polyclonal antibody against ALG10B. It was validated on Western Blot.
Purification:	Affinity Purified

## Target Details

Target:	ALG10B
Alternative Name:	ALG10B ( <a href="#">ALG10B Products</a> )
Background:	ALG10B is a putative alpha-1,2-glucosyltransferase, which adds the third glucose residue to the

## Target Details

lipid-linked oligosaccharide precursor for N-linked glycosylation. ALG10B transfers glucose from dolichyl phosphate glucose (Dol-P-Glc) onto the lipid-linked oligosaccharide Glc2Man9GlcNAc(2)-PP-Dol. When coupled to KCNH2 may reduce KCNH2 sensitivity to classic proarrhythmic drug blockade, possibly by mediating glycosylation of KCNH2.

Alias Symbols: ALG10, KCR1

Protein Interaction Partner: UBC, KCNH2,

Protein Size: 473

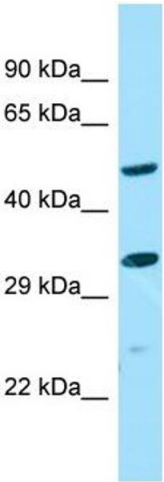
Molecular Weight:	55 kDa
Gene ID:	144245
NCBI Accession:	<a href="#">NM_001013620</a> , <a href="#">NP_001013642</a>
UniProt:	<a href="#">Q5I7T1</a>

## Application Details

Application Notes:	Optimal working dilutions should be determined experimentally by the investigator.
Comment:	Antigen size: 473 AA
Restrictions:	For Research Use only

## Handling

Format:	Liquid
Concentration:	Lot specific
Buffer:	Liquid. Purified antibody supplied in 1x PBS buffer with 0.09 % (w/v) sodium azide and 2 % sucrose.
Preservative:	Sodium azide
Precaution of Use:	This product contains Sodium azide: a POISONOUS AND HAZARDOUS SUBSTANCE which should be handled by trained staff only.
Handling Advice:	Avoid repeated freeze-thaw cycles.
Storage:	-20 °C
Storage Comment:	For short term use, store at 2-8°C up to 1 week. For long term storage, store at -20°C in small aliquots to prevent freeze-thaw cycles.



Western Blotting

**Image 1.** WB Suggested Anti-ALG10B Antibody Titration: 1.0 ug/ml Positive Control: MCF7 Whole Cell