



[Go to Product page](#)

Datasheet for ABIN2790720

## anti-SLC35G3 antibody (N-Term)

### 1 Image

#### Overview

|                      |  |
|----------------------|--|
| Quantity:            | 100 µL                                 |
| Target:              | SLC35G3                                |
| Binding Specificity: | N-Term                                 |
| Reactivity:          | Human                                  |
| Host:                | Rabbit                                 |
| Clonality:           | Polyclonal                             |
| Conjugate:           | This SLC35G3 antibody is un-conjugated |
| Application:         | Western Blotting (WB)                  |

#### Product Details

|                       |  |
|-----------------------|--|
| Immunogen:            | The immunogen is a synthetic peptide directed towards the N-terminal region of Human SLC35G3 |
| Sequence:             | PPSLRWYQRC QPSDATSGLL VALLGGGLPA GFVGPLSRMA YQASNLPSE  |
| Predicted Reactivity: | Human: 100%  |
| Characteristics:      | This is a rabbit polyclonal antibody against SLC35G3. It was validated on Western Blot.      |
| Purification:         | Affinity Purified  |

#### Target Details

|                   |  |
|-------------------|--|
| Target:           | SLC35G3                                      |
| Alternative Name: | SLC35G3 ( <a href="#">SLC35G3 Products</a> ) |

## Target Details

---

Background: The function of this protein remains unknown.  
Alias Symbols: FLJ40154, TMEM21A  
Protein Size: 338

---

Molecular Weight: 37 kDa

---

Gene ID: 146861

---

NCBI Accession: [NM\\_152462](#), [NP\\_689675](#)

---

UniProt: [Q8N808](#)

---

## Application Details

---

Application Notes: Optimal working dilutions should be determined experimentally by the investigator.

---

Comment: Antigen size: 338 AA

---

Restrictions: For Research Use only

---

## Handling

---

Format: Liquid

---

Concentration: Lot specific

---

Buffer: Liquid. Purified antibody supplied in 1x PBS buffer with 0.09 % (w/v) sodium azide and 2 % sucrose.

---

Preservative: Sodium azide

---

Precaution of Use: This product contains Sodium azide: a POISONOUS AND HAZARDOUS SUBSTANCE which should be handled by trained staff only.

---

Handling Advice: Avoid repeated freeze-thaw cycles.

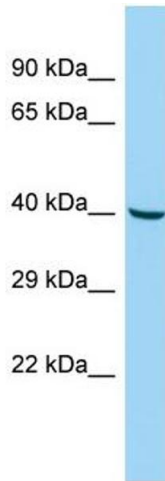
---

Storage: -20 °C

---

Storage Comment: For short term use, store at 2-8°C up to 1 week. For long term storage, store at -20°C in small aliquots to prevent freeze-thaw cycles.

---



### Western Blotting

**Image 1.** Host: Rabbit Target Name: SLC35G3 Sample Type: Fetal Liver lysates Antibody Dilution: 1.0ug/ml