



[Go to Product page](#)

Datasheet for ABIN2790727

## anti-ARL6IP4 antibody (Middle Region)

### 1 Image

#### Overview

Quantity:	100 µL
Target:	ARL6IP4
Binding Specificity:	Middle Region
Reactivity:	Human, Pig, Cow, Horse, Rat, Dog
Host:	Rabbit
Clonality:	Polyclonal
Conjugate:	This ARL6IP4 antibody is un-conjugated
Application:	Western Blotting (WB)

#### Product Details

Immunogen:	The immunogen is a synthetic peptide directed towards the middle region of human ARL6IP4
Sequence:	SSSSSSDGRK KRGKYKDKRR KKKKKRKKLK KKGKEKAEAQ QVEALPGPSL
Predicted Reactivity:	Cow: 86%, Dog: 86%, Horse: 86%, Human: 100%, Pig: 86%, Rat: 80%
Characteristics:	This is a rabbit polyclonal antibody against ARL6IP4. It was validated on Western Blot.
Purification:	Affinity Purified

#### Target Details

Target:	ARL6IP4
Alternative Name:	ARL6IP4 ( <a href="#">ARL6IP4 Products</a> )
Background:	Alias Symbols: SR-25, SRp25, SFRS20, SRp37

## Target Details

---

Protein Size: 229

Molecular Weight: 25 kDa

Gene ID: 51329

NCBI Accession: [NM\\_001002251](#), [NP\\_001002251](#)

UniProt: [Q66PJ3](#)

## Application Details

---

Restrictions: For Research Use only

## Handling

---

Format: Liquid

Concentration: 1 mg/mL

Buffer: Liquid. Purified antibody supplied in 1x PBS buffer with 0.09 % (w/v) sodium azide and 2 % sucrose.

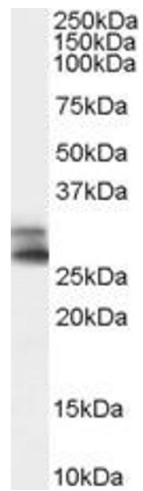
Preservative: Sodium azide

Precaution of Use: This product contains Sodium azide: a POISONOUS AND HAZARDOUS SUBSTANCE which should be handled by trained staff only.

Handling Advice: Avoid repeat freeze-thaw cycles.

Storage: -20 °C

Storage Comment: For short term use, store at 2-8°C up to 1 week. For long term storage, store at -20°C in small aliquots to prevent freeze-thaw cycles.



### Western Blotting

Image 1.