



[Go to Product page](#)

Datasheet for ABIN2790734

## anti-Plet1 antibody (Middle Region)

### 1 Image

#### Overview

|                      |                                      |
|----------------------|--------------------------------------|
| Quantity:            | 100 µL                               |
| Target:              | Plet1 (C11orf34)                     |
| Binding Specificity: | Middle Region                        |
| Reactivity:          | Human                                |
| Host:                | Rabbit                               |
| Clonality:           | Polyclonal                           |
| Conjugate:           | This Plet1 antibody is un-conjugated |
| Application:         | Western Blotting (WB)                |

#### Product Details

|                       |   |
|-----------------------|---|
| Immunogen:            | The immunogen is a synthetic peptide directed towards the middle region of Human C11orf34 |
| Sequence:             | NSDSAGLWQR ADKNCYSNST YYVKDQYMTV LEAQWQAPEP ENITEVEIQ                                     |
| Predicted Reactivity: | Human: 100%   |
| Characteristics:      | This is a rabbit polyclonal antibody against C11orf34. It was validated on Western Blot.  |
| Purification:         | Affinity Purified   |

#### Target Details

|                   |  |
|-------------------|--|
| Target:           | Plet1 (C11orf34)   |
| Alternative Name: | C11orf34 ( <a href="#">C11orf34 Products</a> )   |
| Background:       | C11orf34 may participate in the wound response during the healing process, and promote |

## Target Details

---

wound repair.

Alias Symbols: PLET1

Protein Size: 207

---

Molecular Weight: 22 kDa

---

Gene ID: 349633

---

NCBI Accession: [NM\\_001145024](#), [NP\\_001138496](#)

---

UniProt: [Q6UQ28](#)

## Application Details

---

Application Notes: Optimal working dilutions should be determined experimentally by the investigator.

---

Comment: Antigen size: 207 AA

---

Restrictions: For Research Use only

## Handling

---

Format: Liquid

---

Concentration: Lot specific

---

Buffer: Liquid. Purified antibody supplied in 1x PBS buffer with 0.09 % (w/v) sodium azide and 2 % sucrose.

---

Preservative: Sodium azide

---

Precaution of Use: This product contains Sodium azide: a POISONOUS AND HAZARDOUS SUBSTANCE which should be handled by trained staff only.

---

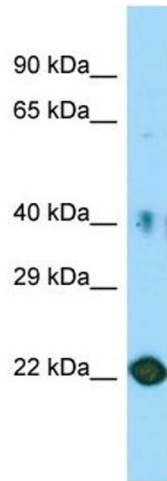
Handling Advice: Avoid repeated freeze-thaw cycles.

---

Storage: -20 °C

---

Storage Comment: For short term use, store at 2-8°C up to 1 week. For long term storage, store at -20°C in small aliquots to prevent freeze-thaw cycles.



### Western Blotting

**Image 1.** Host: Rabbit Target Name: C11orf34 Sample Type: HT1080 Whole Cell lysates Antibody Dilution: 1.0ug/ml