



[Go to Product page](#)

Datasheet for ABIN2790735
anti-PAGR1 antibody (N-Term)

1 Image

Overview

Quantity:	100 µL
Target:	PAGR1
Binding Specificity:	N-Term
Reactivity:	Human, Horse, Pig, Rabbit, Cow, Goat
Host:	Rabbit
Clonality:	Polyclonal
Conjugate:	This PAGR1 antibody is un-conjugated
Application:	Western Blotting (WB)

Product Details

Immunogen:	The immunogen is a synthetic peptide directed towards the N-terminal region of Human C16orf53
Sequence:	GPSASAGKAE DEGEGGREET EREGSGGEEA QGEVPSAGGE EPAEEDSEDW
Predicted Reactivity:	Cow: 85%, Goat: 85%, Horse: 83%, Human: 100%, Pig: 83%, Rabbit: 92%
Characteristics:	This is a rabbit polyclonal antibody against C16orf53. It was validated on Western Blot.
Purification:	Affinity Purified

Target Details

Target:	PAGR1
Alternative Name:	C16orf53 (PAGR1 Products)

Target Details

Background: The function of this protein remains unknown.
Alias Symbols: FLJ22459, GAS, MGC4606, PA1, C16orf53
Protein Interaction Partner: UBC, NCOA1, ESR1, TROVE2, APP, KMT2C, NCOA6, PAXIP1, WDR5, KMT2B, ASH2L, RBBP5, SLX4IP, SLX1B,
Protein Size: 254

Molecular Weight: 28 kDa

Gene ID: 79447

NCBI Accession: [NM_024516](#), [NP_078792](#)

UniProt: [Q9BTK6](#)

Application Details

Application Notes: Optimal working dilutions should be determined experimentally by the investigator.

Comment: Antigen size: 254 AA

Restrictions: For Research Use only

Handling

Format: Liquid

Concentration: Lot specific

Buffer: Liquid. Purified antibody supplied in 1x PBS buffer with 0.09 % (w/v) sodium azide and 2 % sucrose.

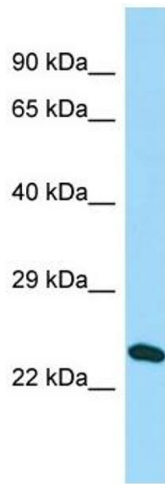
Preservative: Sodium azide

Precaution of Use: This product contains Sodium azide: a POISONOUS AND HAZARDOUS SUBSTANCE which should be handled by trained staff only.

Handling Advice: Avoid repeated freeze-thaw cycles.

Storage: -20 °C

Storage Comment: For short term use, store at 2-8°C up to 1 week. For long term storage, store at -20°C in small aliquots to prevent freeze-thaw cycles.



Western Blotting

Image 1. Host: Rabbit Target Name: C16orf53 Sample Type: HeLa Whole cell lysates Antibody Dilution: 1.0ug/ml
PAGR1 is supported by BioGPS gene expression data to be expressed in HeLa