



[Go to Product page](#)

Datasheet for ABIN2790736
anti-CABP7 antibody (C-Term)

1 Image

Overview

Quantity:	100 µL
Target:	CABP7
Binding Specificity:	C-Term
Reactivity:	Human, Mouse, Rat, Guinea Pig, Horse, Rabbit, Cow, Dog
Host:	Rabbit
Clonality:	Polyclonal
Conjugate:	This CABP7 antibody is un-conjugated
Application:	Western Blotting (WB)

Product Details

Immunogen:	The immunogen is a synthetic peptide directed towards the C-terminal region of Human CABP7
Sequence:	LYDTFCEHLS MKDIENIIMT EEESHLGTAE ECPVDVETCS NQQRQTCVR
Predicted Reactivity:	Cow: 100%, Dog: 100%, Guinea Pig: 100%, Horse: 100%, Human: 100%, Mouse: 100%, Rabbit: 100%, Rat: 100%
Characteristics:	This is a rabbit polyclonal antibody against CABP7. It was validated on Western Blot.
Purification:	Affinity Purified

Target Details

Target:	CABP7
Alternative Name:	CABP7 (CABP7 Products)

Target Details

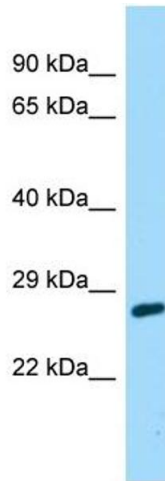
Background:	CABP7 negatively regulates Golgi-to-plasma membrane trafficking by interacting with PI4KB and inhibiting its activity. Alias Symbols: CALN2, MGC57793 Protein Size: 215
Molecular Weight:	24 kDa
Gene ID:	164633
NCBI Accession:	NM_182527 , NP_872333
UniProt:	Q86V35

Application Details

Application Notes:	Optimal working dilutions should be determined experimentally by the investigator.
Comment:	Antigen size: 215 AA
Restrictions:	For Research Use only

Handling

Format:	Liquid
Concentration:	Lot specific
Buffer:	Liquid. Purified antibody supplied in 1x PBS buffer with 0.09 % (w/v) sodium azide and 2 % sucrose.
Preservative:	Sodium azide
Precaution of Use:	This product contains Sodium azide: a POISONOUS AND HAZARDOUS SUBSTANCE which should be handled by trained staff only.
Handling Advice:	Avoid repeated freeze-thaw cycles.
Storage:	-20 °C
Storage Comment:	For short term use, store at 2-8°C up to 1 week. For long term storage, store at -20°C in small aliquots to prevent freeze-thaw cycles.



Western Blotting

Image 1. Host: Rabbit Target Name: CABP7 Sample Type: 721_B Whole Cell lysates Antibody Dilution: 1.0ug/ml