

Datasheet for ABIN2790739
anti-CCDC59 antibody (C-Term)[Go to Product page](#)

1 Image

Overview

Quantity:	100 µL
Target:	CCDC59
Binding Specificity:	C-Term
Reactivity:	Human, Mouse, Rat, Cow, Horse, Pig, Rabbit, Dog, Guinea Pig, Saccharomyces cerevisiae
Host:	Rabbit
Clonality:	Polyclonal
Conjugate:	This CCDC59 antibody is un-conjugated
Application:	Western Blotting (WB)

Product Details

Immunogen:	The immunogen is a synthetic peptide directed towards the C-terminal region of Mouse Ccdc59
Sequence:	KRAAKKFEFE MRKQEREEAQ RLYKKKKMEA FKILSKKTKK GQPNLNLQME
Predicted Reactivity:	Cow: 93%, Dog: 85%, Guinea Pig: 91%, Horse: 93%, Human: 100%, Mouse: 92%, Pig: 93%, Rabbit: 86%, Rat: 100%, Yeast: 82%
Characteristics:	This is a rabbit polyclonal antibody against Ccdc59. It was validated on Western Blot.
Purification:	Affinity Purified

Target Details

Target:	CCDC59
Alternative Name:	Ccdc59 (CCDC59 Products)

Target Details

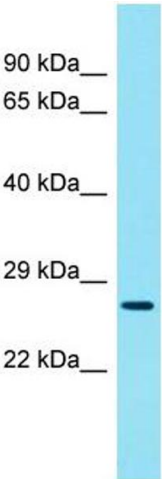
Background:	<p>Ccdc59 is a component of the transcription complexes of the pulmonary surfactant-associated protein-B (SFTPB) and -C (SFTPC). It enhances homeobox protein Nkx-2.1-activated SFTPB and SFTPC promoter activities.</p> <p>Alias Symbols: 2300004H16Rik, D10Ert718e</p> <p>Protein Size: 240</p>
Molecular Weight:	26 kDa
Gene ID:	52713
NCBI Accession:	NM_025602 , NP_079878
UniProt:	Q8R2N0

Application Details

Restrictions:	For Research Use only
---------------	-----------------------

Handling

Format:	Liquid
Concentration:	1 mg/mL
Buffer:	Liquid. Purified antibody supplied in 1x PBS buffer with 0.09 % (w/v) sodium azide and 2 % sucrose.
Preservative:	Sodium azide
Precaution of Use:	This product contains Sodium azide: a POISONOUS AND HAZARDOUS SUBSTANCE which should be handled by trained staff only.
Handling Advice:	Avoid repeat freeze-thaw cycles.
Storage:	-20 °C
Storage Comment:	For short term use, store at 2-8°C up to 1 week. For long term storage, store at -20°C in small aliquots to prevent freeze-thaw cycles.



Western Blotting

Image 1.