

Datasheet for ABIN2790745  
**anti-COL22A1 antibody (N-Term)**[Go to Product page](#)

## 1 Image

## Overview

Quantity:	100 µL
Target:	COL22A1
Binding Specificity:	N-Term
Reactivity:	Human, Guinea Pig, Horse, Mouse, Dog, Rabbit, Rat, Cow
Host:	Rabbit
Clonality:	Polyclonal
Conjugate:	This COL22A1 antibody is un-conjugated
Application:	Western Blotting (WB)

## Product Details

Immunogen:	The immunogen is a synthetic peptide directed towards the N-terminal region of Human COL22A1
Sequence:	VKEILGKREN GAQSSYVRMG SFPVVQSTED VFPQGLPDEY AFVTTFRFRK
Predicted Reactivity:	Cow: 92%, Dog: 79%, Guinea Pig: 100%, Horse: 100%, Human: 100%, Mouse: 100%, Rabbit: 86%, Rat: 100%
Characteristics:	This is a rabbit polyclonal antibody against COL22A1. It was validated on Western Blot.
Purification:	Affinity Purified

## Target Details

Target:	COL22A1
---------	---------

## Target Details

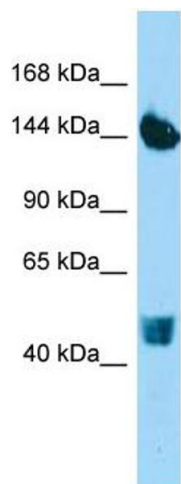
Alternative Name:	COL22A1 ( <a href="#">COL22A1 Products</a> )
Background:	<p>COL22A1, a member of the FACIT (fibrillar-associated collagens with interrupted triple helices) subgroup of the collagen protein family, specifically localizes to tissue junctions.</p> <p>Alias Symbols: -</p> <p>Protein Size: 1626</p>
Molecular Weight:	161 kDa
Gene ID:	169044
NCBI Accession:	<a href="#">NM_152888</a> , <a href="#">NP_690848</a>
UniProt:	<a href="#">Q8NFW1</a>

## Application Details

Application Notes:	Optimal working dilutions should be determined experimentally by the investigator.
Comment:	Antigen size: 1626 AA
Restrictions:	For Research Use only

## Handling

Format:	Liquid
Concentration:	Lot specific
Buffer:	Liquid. Purified antibody supplied in 1x PBS buffer with 0.09 % (w/v) sodium azide and 2 % sucrose.
Preservative:	Sodium azide
Precaution of Use:	This product contains Sodium azide: a POISONOUS AND HAZARDOUS SUBSTANCE which should be handled by trained staff only.
Handling Advice:	Avoid repeated freeze-thaw cycles.
Storage:	-20 °C
Storage Comment:	For short term use, store at 2-8°C up to 1 week. For long term storage, store at -20°C in small aliquots to prevent freeze-thaw cycles.



Western Blotting

**Image 1.** Host: Rabbit Target Name: COL22A1 Sample Type: HepG2 Whole Cell lysates Antibody Dilution: 1.0ug/ml