

Datasheet for ABIN2790749

anti-CYP4F22 antibody (Middle Region)[Go to Product page](#)**1** Image

Overview

Quantity:	100 µL
Target:	CYP4F22
Binding Specificity:	Middle Region
Reactivity:	Human, Pig, Rabbit, Cow, Dog, Horse, Mouse, Rat
Host:	Rabbit
Clonality:	Polyclonal
Conjugate:	This CYP4F22 antibody is un-conjugated
Application:	Western Blotting (WB)

Product Details

Immunogen:	The immunogen is a synthetic peptide directed towards the middle region of Human CYP4F22
Sequence:	TLDSLQKCVF SYNSNCQEKM SDYISAIIEI SALSVERRQYR LHHYLDFIYY
Predicted Reactivity:	Cow: 100%, Dog: 100%, Horse: 100%, Human: 100%, Mouse: 86%, Pig: 100%, Rabbit: 100%, Rat: 93%
Characteristics:	This is a rabbit polyclonal antibody against CYP4F22. It was validated on Western Blot.
Purification:	Affinity Purified

Target Details

Target:	CYP4F22
Alternative Name:	CYP4F22 (CYP4F22 Products)

Target Details

Background:	<p>This gene encodes a member of the cytochrome P450 superfamily of enzymes. The cytochrome P450 proteins are monooxygenases which catalyze many reactions involved in drug metabolism and synthesis of cholesterol, steroids and other lipids. This gene is part of a cluster of cytochrome P450 genes on chromosome 19 and encodes an enzyme thought to play a role in the 12(R)-lipoxygenase pathway. Mutations in this gene are the cause of ichthyosis lamellar type 3.</p> <p>Alias Symbols: FLJ39501, LI3</p> <p>Protein Interaction Partner: UBC,</p> <p>Protein Size: 531</p>
Molecular Weight:	62 kDa
Gene ID:	126410
NCBI Accession:	NM_173483 , NP_775754
UniProt:	Q6NT55

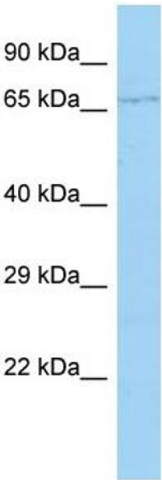
Application Details

Application Notes:	Optimal working dilutions should be determined experimentally by the investigator.
Comment:	Antigen size: 531 AA
Restrictions:	For Research Use only

Handling

Format:	Liquid
Concentration:	Lot specific
Buffer:	Liquid. Purified antibody supplied in 1x PBS buffer with 0.09 % (w/v) sodium azide and 2 % sucrose.
Preservative:	Sodium azide
Precaution of Use:	This product contains Sodium azide: a POISONOUS AND HAZARDOUS SUBSTANCE which should be handled by trained staff only.
Handling Advice:	Avoid repeated freeze-thaw cycles.
Storage:	-20 °C
Storage Comment:	For short term use, store at 2-8°C up to 1 week. For long term storage, store at -20°C in small

aliquots to prevent freeze-thaw cycles.



Western Blotting

Image 1. Host: Rabbit Target Name: CYP4F22 Sample Type: 721_B Whole Cell lysates Antibody Dilution: 1.0ug/ml