

Datasheet for ABIN2790768  
**anti-GPR25 antibody (C-Term)**[Go to Product page](#)

## 1 Image

## Overview

Quantity:	100 µL
Target:	GPR25
Binding Specificity:	C-Term
Reactivity:	Human, Mouse, Rat, Rabbit, Guinea Pig
Host:	Rabbit
Clonality:	Polyclonal
Conjugate:	This GPR25 antibody is un-conjugated
Application:	Western Blotting (WB)

## Product Details

Immunogen:	The immunogen is a synthetic peptide directed towards the C-terminal region of Human GPR25
Sequence:	LIYLLDRSF RARALDGACG RTGRLARRIS SASSLSRDDS SVFRCRAQAA
Predicted Reactivity:	Guinea Pig: 93%, Human: 100%, Mouse: 100%, Rabbit: 86%, Rat: 100%
Characteristics:	This is a rabbit polyclonal antibody against GPR25. It was validated on Western Blot.
Purification:	Affinity Purified

## Target Details

Target:	GPR25
Alternative Name:	GPR25 ( <a href="#">GPR25 Products</a> )
Background:	GPR25 is a orphan receptor.

## Target Details

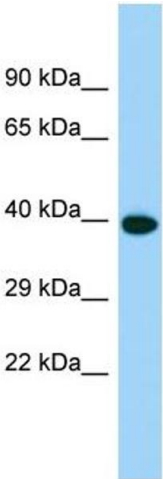
	Alias Symbols: - Protein Interaction Partner: NAALADL2, CCDC155, CREB3L1, FATE1, PNMA1, VAPB, GGT7, Protein Size: 361
Molecular Weight:	40 kDa
Gene ID:	2848
NCBI Accession:	<a href="#">NM_005298</a> , <a href="#">NP_005289</a>
UniProt:	<a href="#">O00155</a>

## Application Details

Application Notes:	Optimal working dilutions should be determined experimentally by the investigator.
Comment:	Antigen size: 361 AA
Restrictions:	For Research Use only

## Handling

Format:	Liquid
Concentration:	Lot specific
Buffer:	Liquid. Purified antibody supplied in 1x PBS buffer with 0.09 % (w/v) sodium azide and 2 % sucrose.
Preservative:	Sodium azide
Precaution of Use:	This product contains Sodium azide: a POISONOUS AND HAZARDOUS SUBSTANCE which should be handled by trained staff only.
Handling Advice:	Avoid repeated freeze-thaw cycles.
Storage:	-20 °C
Storage Comment:	For short term use, store at 2-8°C up to 1 week. For long term storage, store at -20°C in small aliquots to prevent freeze-thaw cycles.



Western Blotting

**Image 1.** Host: Rabbit Target Name: GPR25 Sample Type: Fetal Heart lysates Antibody Dilution: 1.0ug/ml