

Datasheet for ABIN2790770
anti-GPR45 antibody (N-Term)[Go to Product page](#)

1 Image

Overview

Quantity:	100 µL
Target:	GPR45
Binding Specificity:	N-Term
Reactivity:	Human
Host:	Rabbit
Clonality:	Polyclonal
Conjugate:	This GPR45 antibody is un-conjugated
Application:	Western Blotting (WB)

Product Details

Immunogen:	The immunogen is a synthetic peptide directed towards the N-terminal region of Human GPR45
Sequence:	LNTSNASDSG STQLPAPLRI SLAIVMLLMT VVGFLGNTVV CIIVYQRPAM
Predicted Reactivity:	Human: 100%
Characteristics:	This is a rabbit polyclonal antibody against GPR45. It was validated on Western Blot.
Purification:	Affinity Purified

Target Details

Target:	GPR45
Alternative Name:	GPR45 (GPR45 Products)
Background:	This intronless gene encodes a member of the G protein-coupled receptor (GPCR) family.

Target Details

Members of this protein family contain seven putative transmembrane domains and may mediate signaling processes to the interior of the cell via activation of heterotrimeric G proteins.

This protein may function in the central nervous system.

Alias Symbols: PSP24, PSP24(ALPHA), PSP24A

Protein Size: 372

Molecular Weight: 41 kDa

Gene ID: 11250

NCBI Accession: [NM_007227](#), [NP_009158](#)

UniProt: [Q9Y5Y3](#)

Application Details

Application Notes: Optimal working dilutions should be determined experimentally by the investigator.

Comment: Antigen size: 372 AA

Restrictions: For Research Use only

Handling

Format: Liquid

Concentration: Lot specific

Buffer: Liquid. Purified antibody supplied in 1x PBS buffer with 0.09 % (w/v) sodium azide and 2 % sucrose.

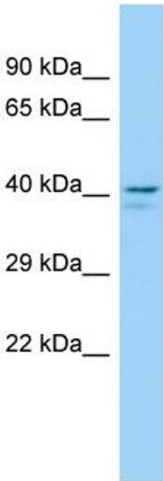
Preservative: Sodium azide

Precaution of Use: This product contains Sodium azide: a POISONOUS AND HAZARDOUS SUBSTANCE which should be handled by trained staff only.

Handling Advice: Avoid repeated freeze-thaw cycles.

Storage: -20 °C

Storage Comment: For short term use, store at 2-8°C up to 1 week. For long term storage, store at -20°C in small aliquots to prevent freeze-thaw cycles.



Western Blotting

Image 1. Host: Rabbit Target Name: GPR45 Sample Type: Fetal Lung lysates Antibody Dilution: 1.0ug/ml