

Datasheet for ABIN2790771  
**anti-GPR45 antibody (C-Term)**[Go to Product page](#)

## 1 Image

## Overview

|                      |  |
|----------------------|--|
| Quantity:            | 100 µL   |
| Target:              | GPR45  |
| Binding Specificity: | C-Term   |
| Reactivity:          | Human, Mouse, Rabbit, Cow, Horse, Dog, Guinea Pig, Rat |
| Host:                | Rabbit   |
| Clonality:           | Polyclonal   |
| Conjugate:           | This GPR45 antibody is un-conjugated                   |
| Application:         | Western Blotting (WB)                                  |

## Product Details

|                       |  |
|-----------------------|--|
| Immunogen:            | The immunogen is a synthetic peptide directed towards the C-terminal region of Human GPR45           |
| Sequence:             | YVVTLVAVF FAPFGVMLCA YMCILNTRK NAVRVHNQSD SLDLRQLTRA   |
| Predicted Reactivity: | Cow: 79%, Dog: 100%, Guinea Pig: 100%, Horse: 100%, Human: 100%, Mouse: 100%, Rabbit: 93%, Rat: 100% |
| Characteristics:      | This is a rabbit polyclonal antibody against GPR45. It was validated on Western Blot.                |
| Purification:         | Affinity Purified  |

## Target Details

|                   |  |
|-------------------|--|
| Target:           | GPR45                                    |
| Alternative Name: | GPR45 ( <a href="#">GPR45 Products</a> ) |

## Target Details

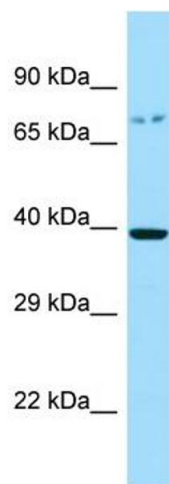
|                   |  |
|-------------------|--|
| Background:       | <p>This intronless gene encodes a member of the G protein-coupled receptor (GPCR) family. Members of this protein family contain seven putative transmembrane domains and may mediate signaling processes to the interior of the cell via activation of heterotrimeric G proteins. This protein may function in the central nervous system.</p> <p>Alias Symbols: PSP24, PSP24(ALPHA), PSP24A</p> <p>Protein Size: 372</p> |
| Molecular Weight: | 41 kDa   |
| Gene ID:          | 11250  |
| NCBI Accession:   | <a href="#">NM_007227</a> , <a href="#">NP_009158</a>  |
| UniProt:          | <a href="#">Q9Y5Y3</a>   |

## Application Details

|                    |  |
|--------------------|--|
| Application Notes: | Optimal working dilutions should be determined experimentally by the investigator. |
| Comment:           | Antigen size: 372 AA   |
| Restrictions:      | For Research Use only  |

## Handling

|                    |   |
|--------------------|---|
| Format:            | Liquid  |
| Concentration:     | Lot specific  |
| Buffer:            | Liquid. Purified antibody supplied in 1x PBS buffer with 0.09 % (w/v) sodium azide and 2 % sucrose.                                     |
| Preservative:      | Sodium azide  |
| Precaution of Use: | This product contains Sodium azide: a POISONOUS AND HAZARDOUS SUBSTANCE which should be handled by trained staff only.                  |
| Handling Advice:   | Avoid repeated freeze-thaw cycles.  |
| Storage:           | -20 °C  |
| Storage Comment:   | For short term use, store at 2-8°C up to 1 week. For long term storage, store at -20°C in small aliquots to prevent freeze-thaw cycles. |



Western Blotting

**Image 1.** Host: Rabbit Target Name: GPR45 Sample Type: RPMI-8226 Whole Cell lysates Antibody Dilution: 1.0ug/ml  
GPR45 is supported by BioGPS gene expression data to be expressed in RPMI 8226