

Datasheet for ABIN2790782
anti-ABHD17A antibody (C-Term)[Go to Product page](#)

3 Images

Overview

Quantity:	100 µL
Target:	ABHD17A
Binding Specificity:	C-Term
Reactivity:	Rat, Human, Mouse, Cow, Dog, Guinea Pig, Horse, Rabbit, Zebrafish (Danio rerio)
Host:	Rabbit
Clonality:	Polyclonal
Conjugate:	This ABHD17A antibody is un-conjugated
Application:	Western Blotting (WB)

Product Details

Immunogen:	The immunogen is a synthetic peptide directed towards the C-terminal region of Human FAM108A1
Sequence:	VPTVDLASRY ECAAVVLHSP LTSGMRVAFP DTKKTYCFDA FPNIEKVSKI
Predicted Reactivity:	Cow: 100%, Dog: 100%, Guinea Pig: 100%, Horse: 100%, Human: 100%, Mouse: 100%, Rabbit: 100%, Rat: 100%, Zebrafish: 100%
Characteristics:	This is a rabbit polyclonal antibody against FAM108A1. It was validated on Western Blot.
Purification:	Affinity Purified

Target Details

Target:	ABHD17A
---------	---------

Target Details

Alternative Name:	FAM108A1 (ABHD17A Products)
Background:	The function of this protein remains unknown. Alias Symbols: C19orf27, MGC5244, FAM108A1 Protein Interaction Partner: HPGDS, UBC, Hoxa1, Protein Size: 361
Molecular Weight:	39 kDa
Gene ID:	81926
NCBI Accession:	NM_031213 , NP_112490
UniProt:	H2R6I8

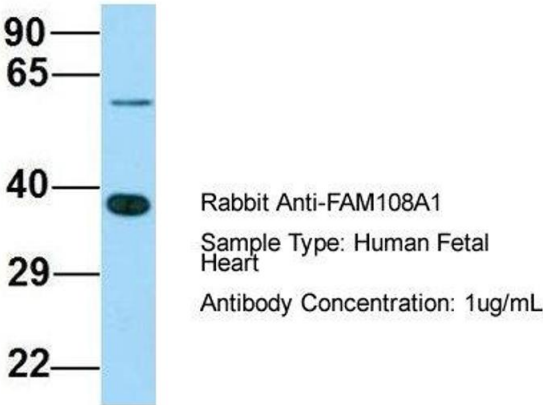
Application Details

Application Notes:	Optimal working dilutions should be determined experimentally by the investigator.
Comment:	Antigen size: 361 AA
Restrictions:	For Research Use only

Handling

Format:	Liquid
Concentration:	Lot specific
Buffer:	Liquid. Purified antibody supplied in 1x PBS buffer with 0.09 % (w/v) sodium azide and 2 % sucrose.
Preservative:	Sodium azide
Precaution of Use:	This product contains Sodium azide: a POISONOUS AND HAZARDOUS SUBSTANCE which should be handled by trained staff only.
Handling Advice:	Avoid repeated freeze-thaw cycles.
Storage:	-20 °C
Storage Comment:	For short term use, store at 2-8°C up to 1 week. For long term storage, store at -20°C in small aliquots to prevent freeze-thaw cycles.

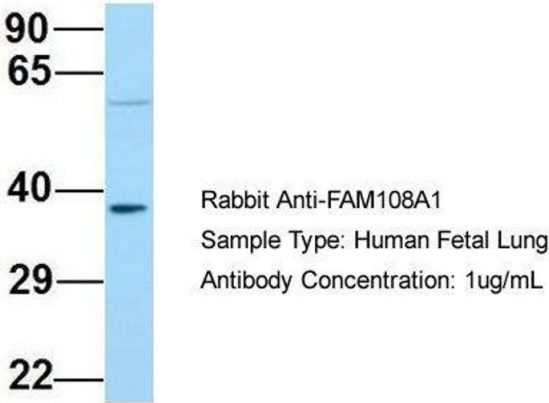
FAM108A1



Western Blotting

Image 1. Host: Rabbit
Target Name: FAM108A1
Sample Tissue: Human Fetal Heart
Antibody Dilution: 1.0 µg/mL

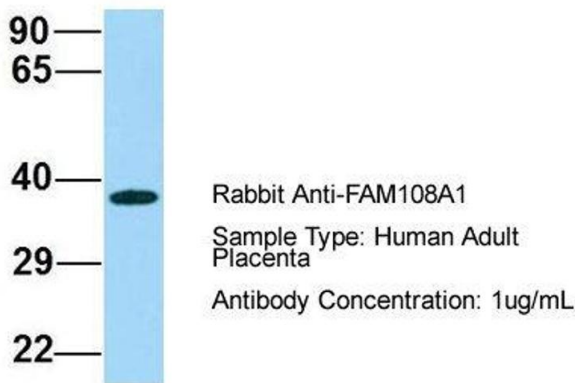
FAM108A1



Western Blotting

Image 2. Host: Rabbit
Target Name: FAM108A1
Sample Tissue: Human Fetal Lung
Antibody Dilution: 1.0 µg/mL

FAM108A1



Western Blotting

Image 3. Host: Rabbit
Target Name: FAM108A1
Sample Tissue: Human Adult Placenta
Antibody Dilution: 1.0 µg/mL