

Datasheet for ABIN2790784

anti-Fam172a antibody (Middle Region)



[Go to Product page](#)

1 Image

Overview

Quantity:	100 µL
Target:	Fam172a
Binding Specificity:	Middle Region
Reactivity:	Rat, Mouse, Human, Dog, Horse, Rabbit, Saccharomyces cerevisiae
Host:	Rabbit
Clonality:	Polyclonal
Conjugate:	This Fam172a antibody is un-conjugated
Application:	Western Blotting (WB)

Product Details

Immunogen:	The immunogen is a synthetic peptide directed towards the middle region of Human FAM172A
Sequence:	SSDSSDEPAE KRERKDKVSK ETKKRRDFYE KYRNPQREKE MMQLYIRENG
Predicted Reactivity:	Dog: 100%, Horse: 100%, Human: 100%, Mouse: 93%, Rabbit: 100%, Rat: 100%, Yeast: 83%
Characteristics:	This is a rabbit polyclonal antibody against FAM172A. It was validated on Western Blot.
Purification:	Affinity Purified

Target Details

Target:	Fam172a
Alternative Name:	FAM172A (Fam172a Products)
Background:	The function of this protein remains unknown.

Target Details

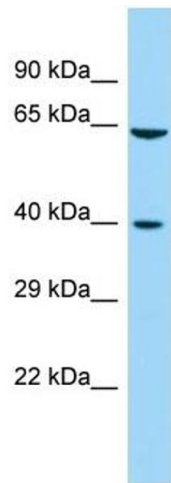
	Alias Symbols: C5orf21, DKFZp564D172
	Protein Interaction Partner: ELAVL1, UBC, Dynll1,
	Protein Size: 370
Molecular Weight:	40 kDa
Gene ID:	83989
NCBI Accession:	NM_001163417 , NP_001156889

Application Details

Application Notes:	Optimal working dilutions should be determined experimentally by the investigator.
Comment:	Antigen size: 370 AA
Restrictions:	For Research Use only

Handling

Format:	Liquid
Concentration:	Lot specific
Buffer:	Liquid. Purified antibody supplied in 1x PBS buffer with 0.09 % (w/v) sodium azide and 2 % sucrose.
Preservative:	Sodium azide
Precaution of Use:	This product contains Sodium azide: a POISONOUS AND HAZARDOUS SUBSTANCE which should be handled by trained staff only.
Handling Advice:	Avoid repeated freeze-thaw cycles.
Storage:	-20 °C
Storage Comment:	For short term use, store at 2-8°C up to 1 week. For long term storage, store at -20°C in small aliquots to prevent freeze-thaw cycles.



Western Blotting

Image 1. Host: Rabbit Target Name: FAM172A Sample Type: Fetal Kidney lysates Antibody Dilution: 1.0ug/ml