

Datasheet for ABIN2790790
anti-Importin 4 antibody (Middle Region)[Go to Product page](#)

1 Image

Overview

Quantity:	100 µL
Target:	Importin 4 (IPO4)
Binding Specificity:	Middle Region
Reactivity:	Human, Rat, Rabbit, Dog, Guinea Pig, Horse, Cow
Host:	Rabbit
Clonality:	Polyclonal
Conjugate:	This Importin 4 antibody is un-conjugated
Application:	Western Blotting (WB)

Product Details

Immunogen:	The immunogen is a synthetic peptide directed towards the middle region of Human IPO4
Sequence:	NLGPKVQPYL PELMECMLQL LRNPSSPRAK ELAVSALGAI ATAAQASLLP
Predicted Reactivity:	Cow: 79%, Dog: 100%, Guinea Pig: 100%, Horse: 100%, Human: 100%, Rabbit: 93%, Rat: 93%
Characteristics:	This is a rabbit polyclonal antibody against IPO4. It was validated on Western Blot.
Purification:	Affinity Purified

Target Details

Target:	Importin 4 (IPO4)
Alternative Name:	IPO4 (IPO4 Products)
Background:	The function of this protein remains unknown.

Target Details

Alias Symbols: FLJ23338, Imp4, MGC131665

Protein Interaction Partner: UBC, NEDD8, MDM2, SUMO1, RNF2, TRMT112, TNPO1, CBS, EGFR, SOX2, gag-pol, FN1, CA9, RPL5, IPO5, APP, UL35, nxf-1, vpr, NXF1, CUL3, ASF1A, HIST1H3C, CDAN1, ASF1B, SIRT7, VAV2, SUMO2, HIST1H3A, MYC, H3F3A, FANCD2, CEBPD, HAT1, HIST3H3, BAP1, GSTK1, BRF2, PHL

Protein Size: 1081

Molecular Weight: 119 kDa

Gene ID: 79711

NCBI Accession: [NM_024658](#), [NP_078934](#)

UniProt: [Q8TEX9](#)

Pathways: [Protein targeting to Nucleus](#)

Application Details

Application Notes: Optimal working dilutions should be determined experimentally by the investigator.

Comment: Antigen size: 1081 AA

Restrictions: For Research Use only

Handling

Format: Liquid

Concentration: Lot specific

Buffer: Liquid. Purified antibody supplied in 1x PBS buffer with 0.09 % (w/v) sodium azide and 2 % sucrose.

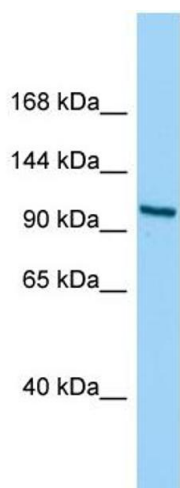
Preservative: Sodium azide

Precaution of Use: This product contains Sodium azide: a POISONOUS AND HAZARDOUS SUBSTANCE which should be handled by trained staff only.

Handling Advice: Avoid repeated freeze-thaw cycles.

Storage: -20 °C

Storage Comment: For short term use, store at 2-8°C up to 1 week. For long term storage, store at -20°C in small aliquots to prevent freeze-thaw cycles.



Western Blotting

Image 1. Host: Rabbit Target Name: IPO4 Sample Type: HeLa Whole Cell lysates Antibody Dilution: 1.0ug/ml IPO4 is supported by BioGPS gene expression data to be expressed in HeLa