



[Go to Product page](#)

Datasheet for ABIN2790793  
**anti-KANK4 antibody (C-Term)**

1 Image

Overview

Quantity:	100 µL
Target:	KANK4
Binding Specificity:	C-Term
Reactivity:	Human, Mouse, Dog, Pig, Rat, Cow, Horse, Rabbit
Host:	Rabbit
Clonality:	Polyclonal
Conjugate:	This KANK4 antibody is un-conjugated
Application:	Western Blotting (WB)

Product Details

Immunogen:	The immunogen is a synthetic peptide directed towards the C-terminal region of Human KANK4
Sequence:	RLLLAHPACD SSLTDKAGRT ALSIALKSPT HMEIAGLLRA HAEQGRSLGL
Predicted Reactivity:	Cow: 93%, Dog: 100%, Horse: 93%, Human: 100%, Mouse: 93%, Pig: 100%, Rabbit: 93%, Rat: 79%
Characteristics:	This is a rabbit polyclonal antibody against KANK4. It was validated on Western Blot.
Purification:	Affinity Purified

Target Details

Target:	KANK4
Alternative Name:	KANK4 ( <a href="#">KANK4 Products</a> )
Background:	KANK4 may be involved in the control of cytoskeleton formation by regulating actin

## Target Details

---

polymerization.

Alias Symbols: ANKRD38, RP5-1155K23.5, dJ1078M7.1

Protein Interaction Partner: UBC,

Protein Size: 367

---

Molecular Weight: 40 kDa

---

Gene ID: 163782

---

NCBI Accession: [NM\\_181712](#), [NP\\_859063](#)

---

## Application Details

---

Application Notes: Optimal working dilution should be determined by the investigator.

---

Restrictions: For Research Use only

---

## Handling

---

Format: Liquid

---

Concentration: 1 mg/mL

---

Buffer: Liquid. Purified antibody supplied in 1x PBS buffer with 0.09 % (w/v) sodium azide and 2 % sucrose.

---

Preservative: Sodium azide

---

Precaution of Use: This product contains Sodium azide: a POISONOUS AND HAZARDOUS SUBSTANCE which should be handled by trained staff only.

---

Handling Advice: Avoid repeat freeze-thaw cycles.

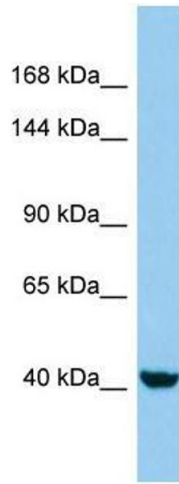
---

Storage: -20 °C

---

Storage Comment: For short term use, store at 2-8°C up to 1 week. For long term storage, store at -20°C in small aliquots to prevent freeze-thaw cycles.

---



### Western Blotting

Image 1.