



Datasheet for ABIN2790794  
**anti-KCTD1 antibody (Middle Region)**



[Go to Product page](#)

1 Image

Overview

Quantity:	100 µL
Target:	KCTD1
Binding Specificity:	Middle Region
Reactivity:	Human, Dog, Horse, Mouse, Cow, Goat, Guinea Pig, Rabbit, Rat
Host:	Rabbit
Clonality:	Polyclonal
Conjugate:	This KCTD1 antibody is un-conjugated
Application:	Western Blotting (WB)

Product Details

Immunogen:	The immunogen is a synthetic peptide directed towards the middle region of Human KCTD1
Sequence:	EEAKYFQLQP MLLEMERWKQ DRETGRFSRP CECLVVRVAP DLGERITLSG
Predicted Reactivity:	Cow: 93%, Dog: 100%, Goat: 93%, Guinea Pig: 93%, Horse: 100%, Human: 100%, Mouse: 100%, Rabbit: 86%, Rat: 93%
Characteristics:	This is a rabbit polyclonal antibody against KCTD1. It was validated on Western Blot.
Purification:	Affinity Purified

Target Details

Target:	KCTD1
Alternative Name:	KCTD1 ( <a href="#">KCTD1 Products</a> )

## Target Details

---

Background: KCTD1 may repress the transcriptional activity of AP-2 family members, including TFAP2A, TFAP2B and TFAP2C to various extent.

Alias Symbols: C18orf5

Protein Interaction Partner: KCTD1, LNX1, KCTD15, LMO3, WDYHV1, EXOSC1, TRAPPC2B, EPM2AIP1, POLR1C, ZBTB25, UBE2I, SDCBP, PSMA1, PRKAA2, SUMO2, WNT3A, CTNNB1, APC, TFAP2C, TFAP2B, TFAP2A,

Protein Size: 257

---

Molecular Weight: 29 kDa

---

Gene ID: 284252

---

NCBI Accession: [NM\\_198991](#), [NP\\_945342](#)

---

UniProt: [Q719H9](#)

## Application Details

---

Application Notes: Optimal working dilutions should be determined experimentally by the investigator.

---

Comment: Antigen size: 257 AA

---

Restrictions: For Research Use only

## Handling

---

Format: Liquid

---

Concentration: Lot specific

---

Buffer: Liquid. Purified antibody supplied in 1x PBS buffer with 0.09 % (w/v) sodium azide and 2 % sucrose.

---

Preservative: Sodium azide

---

Precaution of Use: This product contains Sodium azide: a POISONOUS AND HAZARDOUS SUBSTANCE which should be handled by trained staff only.

---

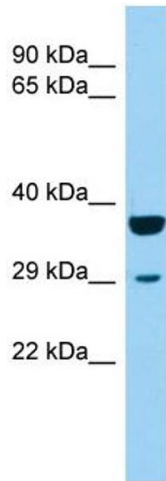
Handling Advice: Avoid repeated freeze-thaw cycles.

---

Storage: -20 °C

---

Storage Comment: For short term use, store at 2-8°C up to 1 week. For long term storage, store at -20°C in small aliquots to prevent freeze-thaw cycles.



### Western Blotting

**Image 1.** Host: Rabbit Target Name: KCTD1 Sample Type: 721\_B Whole Cell lysates Antibody Dilution: 1.0ug/ml